

**SKELETON  
CONSULTANTS  
Pvt. Ltd.**

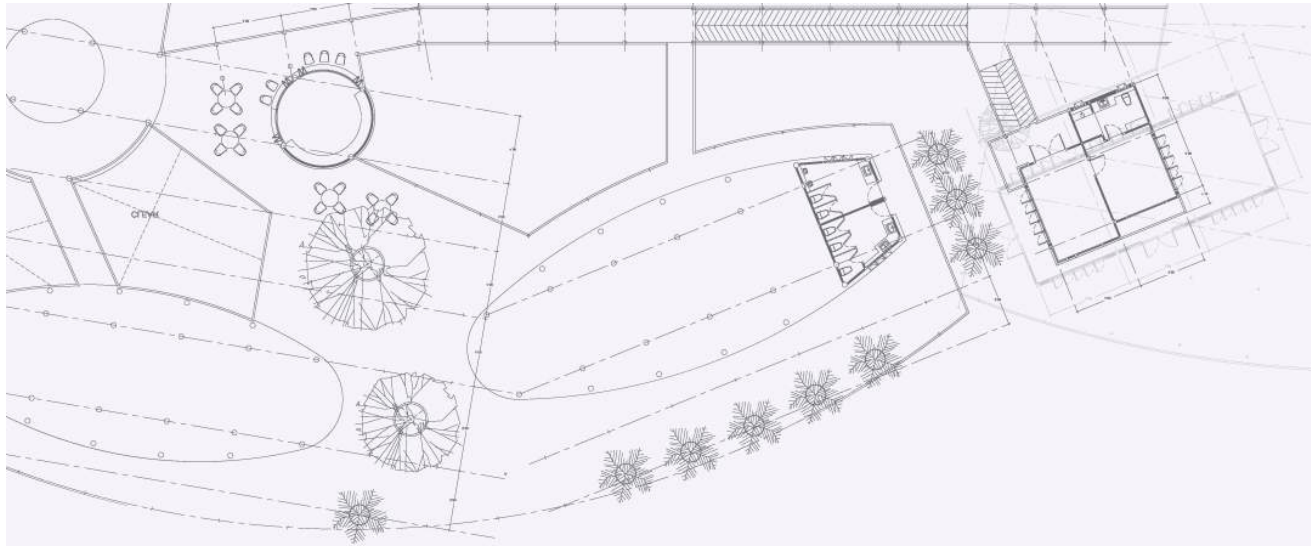


## WHO WE ARE

SCPL was founded on form soil of Morale, Ethics and integrity, seeds of which were laid in 1987. The firm has more than 100 years of cumulative experience in the field of Industrial planning, Civil & Structural engineering consultancy.



Skeleton Consultants Pvt.Ltd.

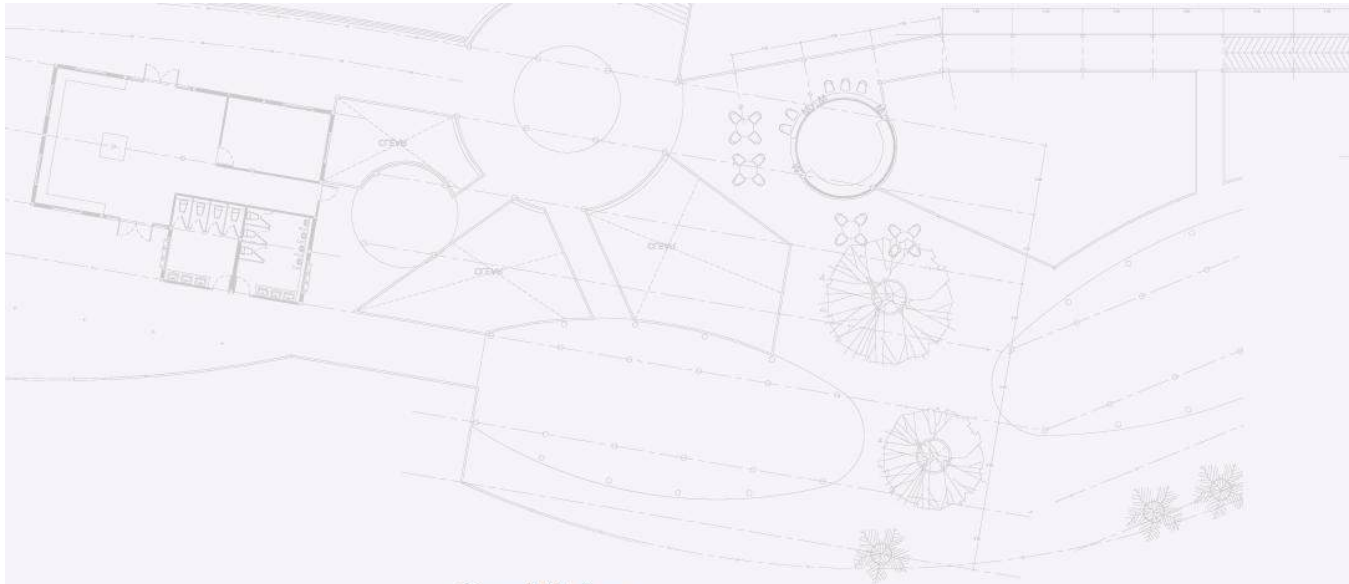


## WHAT WE DO

The organisation renders services in Engineering, Master planning, Detailed Architecture, Interior Design, Landscape design, Project Execution & Management, Structural Engineering of RCC & Steel buildings & structures, Wind engineering, Structural Diagnostic services including Audits, Repair, Rehabilitation & Retrofitting design, Structural Detailing services & BIM applications. Focussed on sustainable designs.



Skeleto Consultants Pvt.Ltd.



## Our Vision

To be the Best and most efficient Integrated Project consultant & Engineering service provider in the area of Industries, Buildings, Structure and infrastructure field delivering exceptional value to its stakeholders consistently.



Skeleton Consultants Pvt.Ltd.





# Meet The Director

---



## ARUN SODHANI

BE(CIVIL) | ME(STRUCT) | MIE

He started from Structural and Civil Engg. designs gradually moved on to Planning and coordination of Industrial projects. Having worked on all segments of Industrial injects , he understands the pulse of this field.



Skeleton Consultants Pvt.Ltd.

# Meet The Director

---



## JAYESH JAIN

BE(CIVIL) | ME(STRUCT) | MIE (I)

He is Masters in Structural Engineering and He was a professor in an engineering college (SGSITS) for 24 years of repute. Working with Skeleton Consultants for over 13 years.



Skeleton Consultants Pvt.Ltd.

# Meet The Director

---



## Er. Dr. ABHAY GUPTA

BE(CIVIL) | ME(STRUCT) | PhD FIE(I)  
MISTE | FIAStructE | MIGS | MISWE | MIRC | MISET

A dynamic, multi-dimensional Civil & Structural Engineer with vast experience in the areas of RCC & Steel Designing, Construction Management, Teaching and Research, and Team Building.



Skeleton Consultants Pvt.Ltd.

# GROWTH

- ◆ THE BUSINESS OF FIRM IS CONTINUOUSLY GROWING .
- ◆ THE TURNOVER SINCE LAST THREE YEARS IS AS UNDER :

2021-2022 : 606.00 LACS

2022-2023 : 822.00 LACS

2023-2024 : 1051.00 LACS

830+ projects & counting...

THE FIRM HAS MADE PERMANENT CLIENTS BY VIRTUE OF IT'S SERVICES.  
IMPORTANT CLIENTS WHO HAVE ENGAGED.  
THE FIRM CONTINUOUSLY OVER LAST 17 YEARS ARE:

◆ OUR ESTEEMED CLIENTS:

VE COMMERCIAL VEHICLES Ltd. (EICHER)  
GROZ ENGINEERING TOOLS  
MAHINDRA AUTO STEEL LTD.  
CAPARO ENGG. INDIA Pvt. Ltd.  
JBM GROUP OF COMPANIES  
NEEL METAL PRODUCTS Ltd. (JBM GROUP)  
MAHLE ENGINE COMPONENTS (I) Ltd.  
GUFIC BIOSCIENCES LTD.  
KINETIC HONDA MOTORS Ltd.  
TATA EXPORTS Ltd.  
GAJRA GEARS Ltd.  
ADANI GROUP  
KHAITAN CHEMICALS & FERT. Ltd.  
K.S. OILS LTD.  
PRATIBHA SYNTEX Ltd.  
FLEXITUFF INDUSTRIES.  
MAHIMA FIBRES Ltd.



## ◆ OUR ESTEEMED CLIENTS:

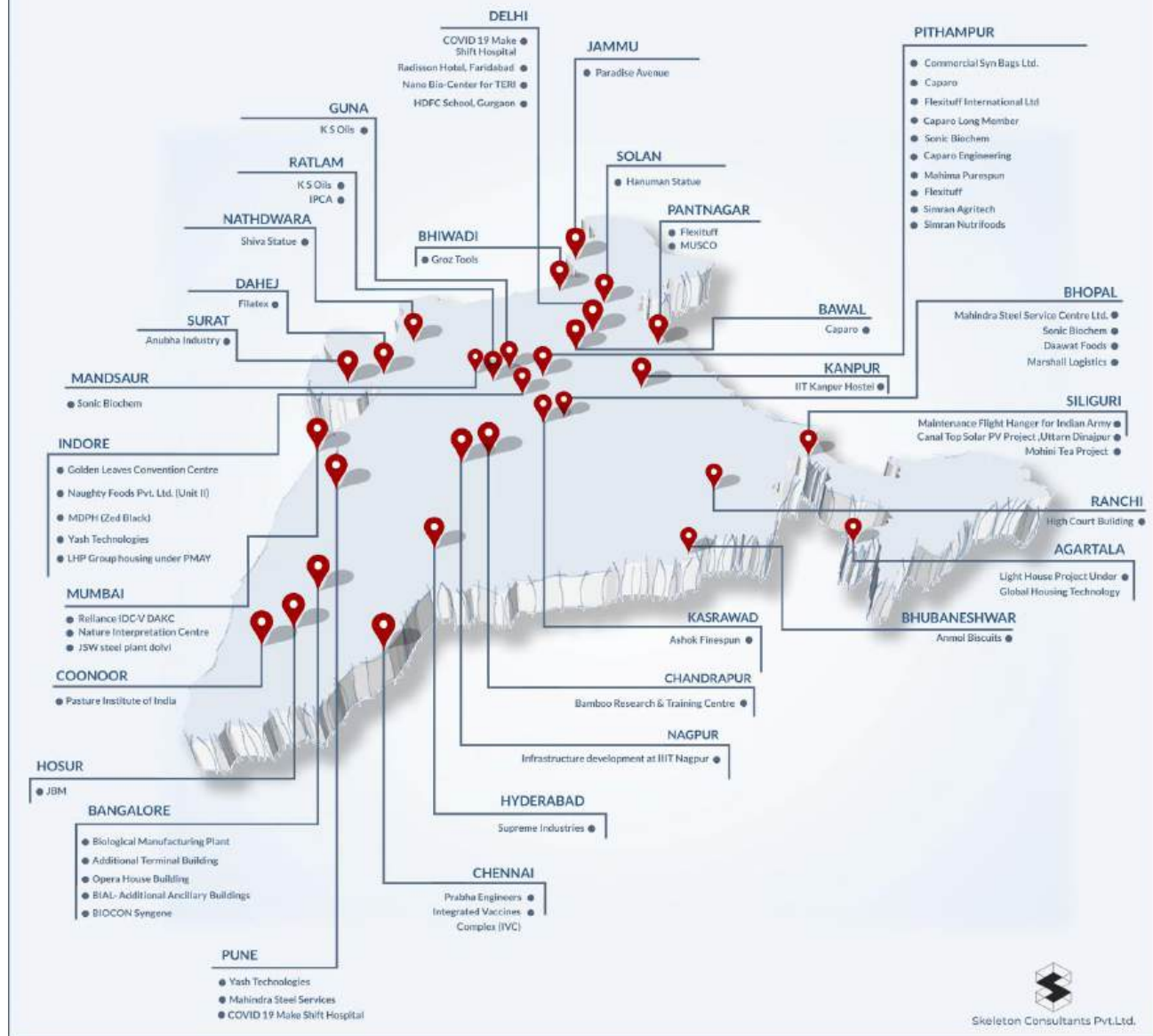
CROMPTON GREAVES  
JAI CORP Ltd.  
THE SUPREME INDUSTRIES PVT. LTD.  
IPCA LABORATORIES Ltd.  
BHASKAR INDUSTRIES Ltd.  
SONIC BIOCHEM EXTRACTION Ltd.  
LT FOODS LTD. (DAAWAT RICE)  
PRABHA ENGINEERS  
SIMRAN AGRITECH  
COMMERCIAL SYN BAGS  
ANUBHA INDUSTRIES Ltd.  
ISGEC GROUP OF INDUSTRIES  
ZED BLACK AGARBATTI  
TEXMO PIPES  
YASH TECHNOLOGIES  
KIRLOSKAR BROTHERS LTD.

# EXPERIENCE

## ◆ WORKED FOR

AUTOMOBILE AND ANCILLARY INDUSTRIES  
ENGINEERING INDUSTRY  
PHARMA INDUSTRIES  
CONFECTIONERY UNITS  
SOYA PLANTS  
GRAIN STORAGE FACILITIES  
EDIBLE OIL INDUSTRIES  
PACKAGING INDUSTRIES  
TEXTILE INDUSTRIES  
CHEMICAL AND FERTILIZER INDUSTRIES  
COMMERCIAL & RESIDENTIAL  
OTHER MISC. UNITS

# OUR PRESENCE



# VE Commercial Vehicles Ltd. (Eicher) Central Store at Pithampur



# VE Commercial Vehicles Ltd. (Eicher) Paint Shop at Pithampur





# VE Commercial Vehicles Ltd. (Eicher) Reliability Lab at Pithampur



# VE Commercial Vehicles Ltd. (Eicher) Vistaar Project at Pithampur



# VE Commercial Vehicles Ltd. (Eicher) Vistaar Project at Pithampur





# VE Commercial Vehicles Ltd. (Eicher) Vistaar Project at Pithampur



# Groz Engineering Tools Pvt. Ltd., Karoli





# Groz Engineering Tools Pvt. Ltd., Karoli



# Groz Engineering Tools Pvt. Ltd., Karoli



# Groz Engineering Tools Pvt. Ltd., Karoli





# CAPARO- PITHAMPUR



# CAPARO LONG MEMBER PITHAMPUR





# CAPARO MARUTI LTD. AT BAWAL



# CAPARO ENGINEERS, NOIDA



# JBM Auto Ltd. at Pithampur





# Neel Auto Pvt. Ltd. at Hosur



# Mahindra Steel Service Centre Ltd.

Bhopal (M.P)



Skeleton Consultants Pvt.Ltd.



# Mahindra Steel Service Centre Ltd.

Bhopal (M.P)



Skeleton Consultants Pvt.Ltd.

# MAHINDRA AUTO STEEL PVT. LTD. (MASL) AT CHAKAN



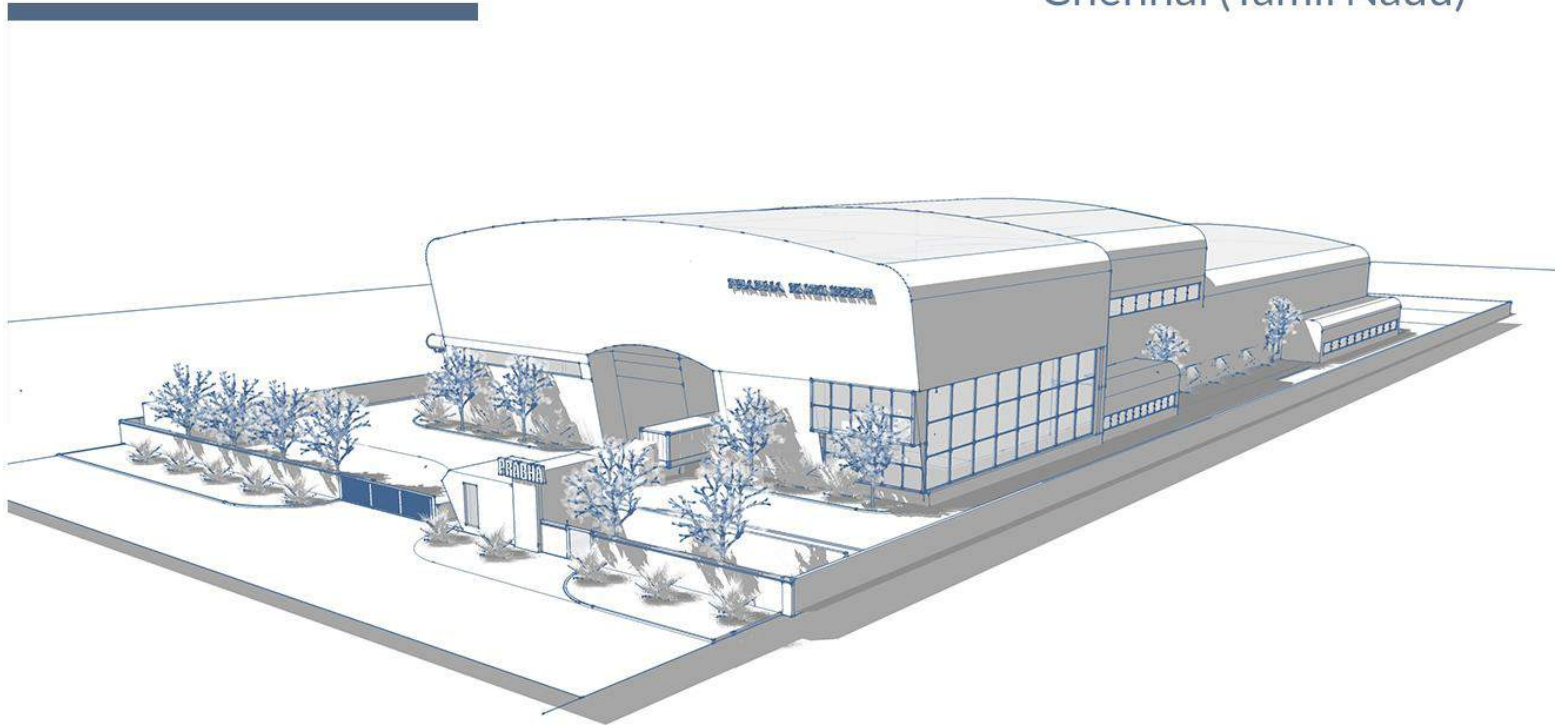


# MAHINDRA UGINE STEEL CO. LTD. (MUSCO) AT PANTNAGAR



# Prabha Engineers

Chennai (Tamil Nadu)



Skeleton Consultants Pvt.Ltd.



# Prabha Engineers

Chennai (Tamil Nadu)



Skeleton Consultants Pvt.Ltd.



# Prabha Engineers

Chennai (Tamil Nadu)



Skeleton Consultants Pvt.Ltd.

# Flexituff International Ltd., Pithampur





# SUPREME INDUSTRIES AT JADCHERLA



# GUFIC BIOSCIENCES LTD. AT PITHAMPUR





# GUFIC BIOSCIENCES LTD. AT PITHAMPUR



# Pratibha Syntex Ltd. at Pithampur



# Swara Hygiene Pvt. Ltd. at Pithampur





# Solis Hygiene Pvt. Ltd. at Pithampur





# Marshall Logistics LLP at Bhopal



# Furniture Plant at Pithampur



# Furniture Plant at Pithampur





# Bio Spinning Pvt. Ltd. at Pithampur Front Wall



# N R Aromas at Indore



# N R Aromas at Indore





# N R Aromas at Indore



# Bakersville India Pvt. Ltd., Indore





# Belmaks Metal (India) Pvt. Ltd. Admin Block at Pithampur





# Ashok Finespun at Kasrawad



# Maral Overseas Ltd. at Nimrani



# Appalto Electronics Pvt. Ltd., Indore





# Appalto Electronics Pvt. Ltd., Indore



# Appalto Electronics Pvt. Ltd., Indore



# FILATEX INDIA LTD. AT DAHEJ





# KS OILS AT GUNA



# SIMRAN AGRITECH, PITHAMPUR





# SIMRAN NUTRIFOODS, PITHAMPUR





# Naughty Foods Pvt. Ltd.

Indore (M.P)



Skeleton Consultants Pvt.Ltd.

# Naughty Foods Pvt. Ltd.

Indore (M.P)



Skeleton Consultants Pvt.Ltd.



# Commercial Syn Bags Limited

Pithampur SEZ3 (M.P)

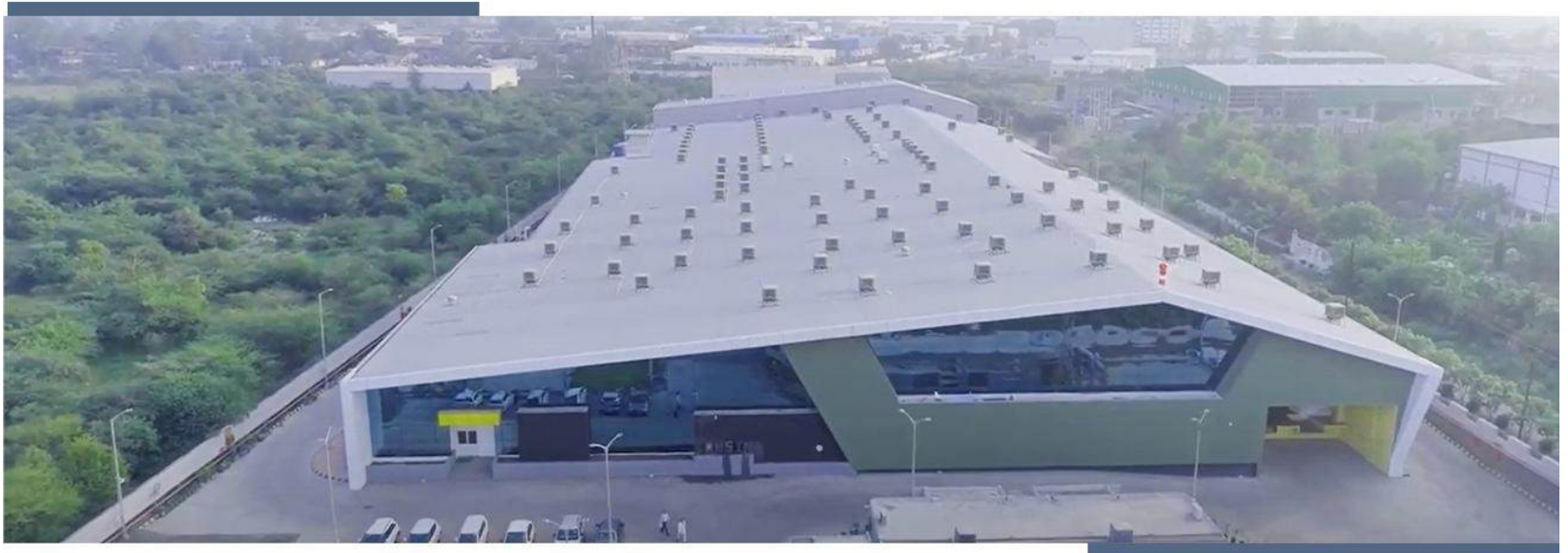


Skeleton Consultants Pvt.Ltd.



# Commercial Syn Bags Limited

Pithampur SEZ3 (M.P)



Skeleton Consultants Pvt.Ltd.

# Commercial Syn Bags Limited

Pithampur SEZ3 (M.P)



Skeleton Consultants Pvt.Ltd.

# Mahle Engine Component India Pvt. Ltd. at Chennai



## Aluminium Foundry Project



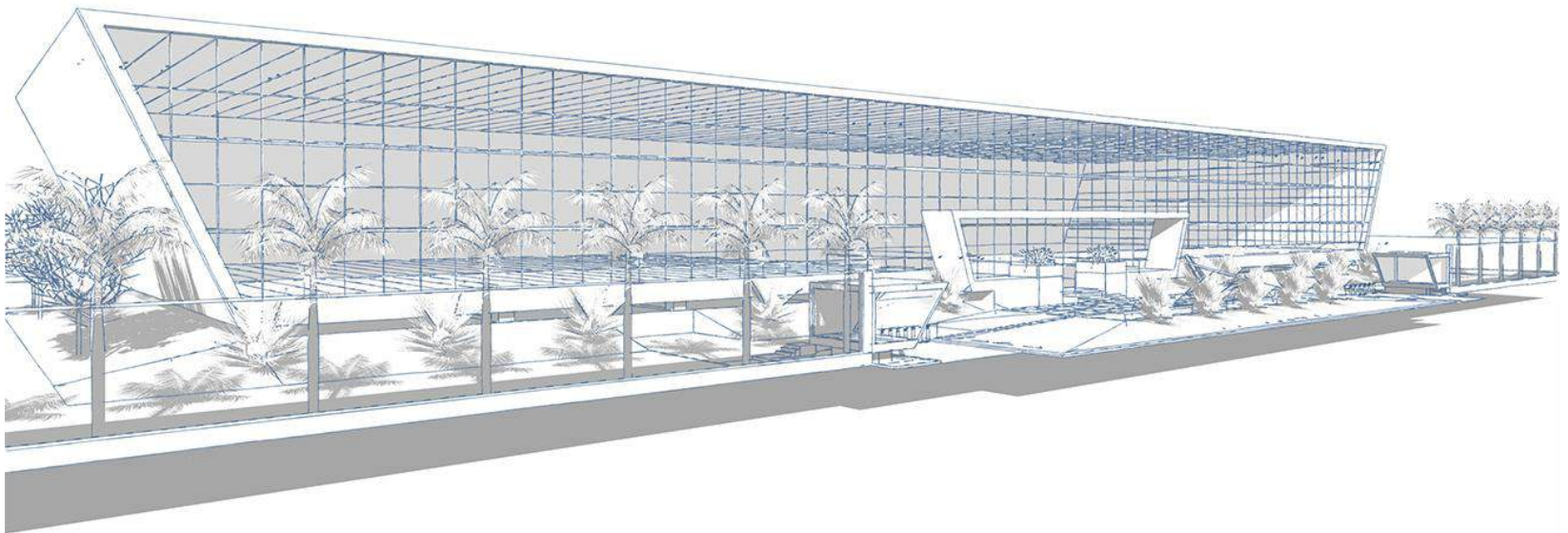
# Mahle Engine Component India Pvt. Ltd. at Pithampur



## Foundry Project

# YASH Technologies

Pune



Skeleton Consultants Pvt.Ltd.

# YASH Technologies

Pune

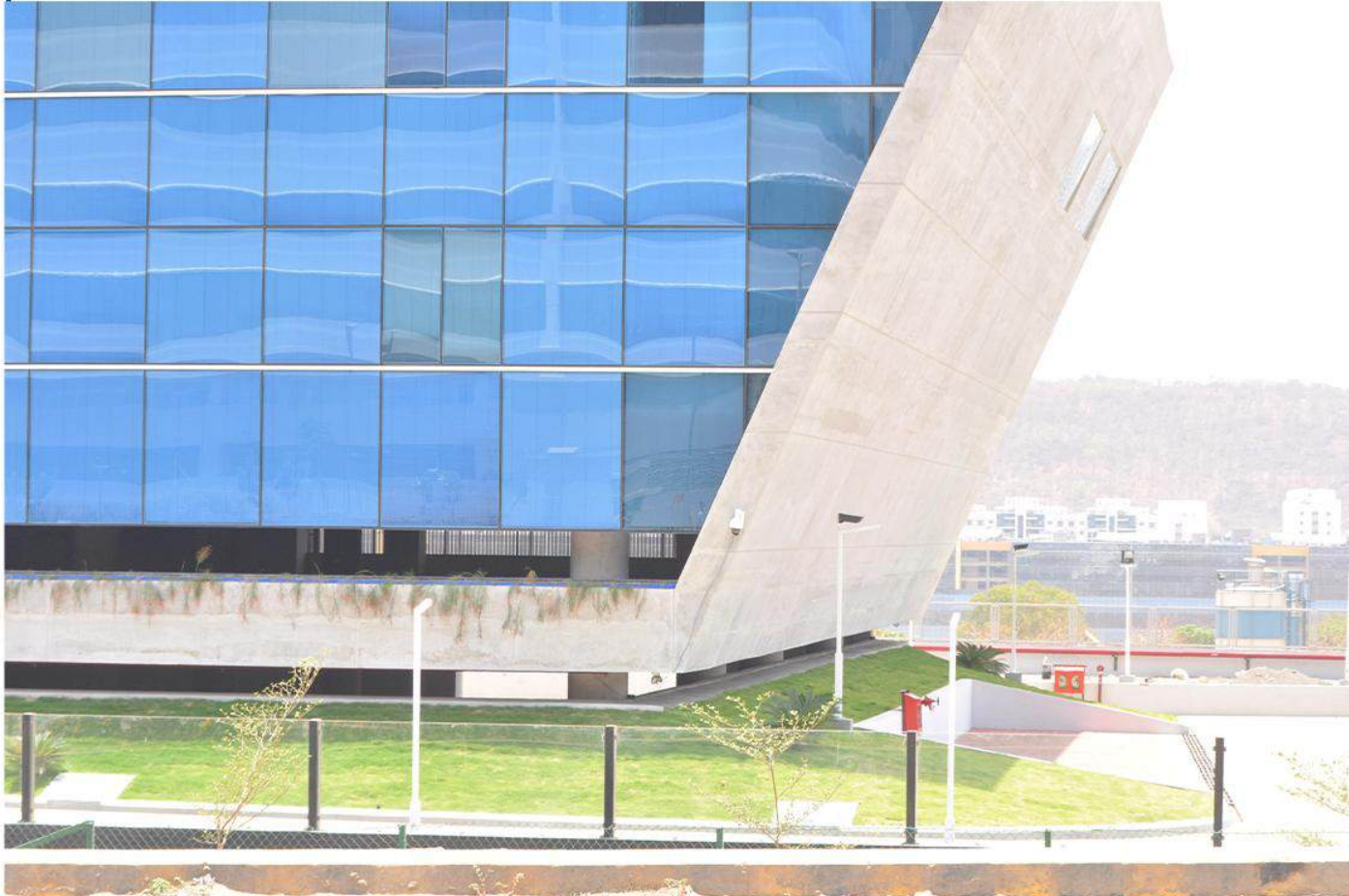


Skeleton Consultants Pvt.Ltd.



# YASH Technologies

Pune



Skeleton Consultants Pvt.Ltd.

# YASH Technologies

Pune



Skeleton Consultants Pvt.Ltd.

# YASH TECHNOLOGIES, INDORE





# YASH TECHNOLOGIES, INDORE



# YASH TECHNOLOGIES, INDORE





# Golden Leaves Convention Centre

Indore (Madhya Pradesh)



Skeleton Consultants Pvt.Ltd.



# Golden Leaves Convention Centre

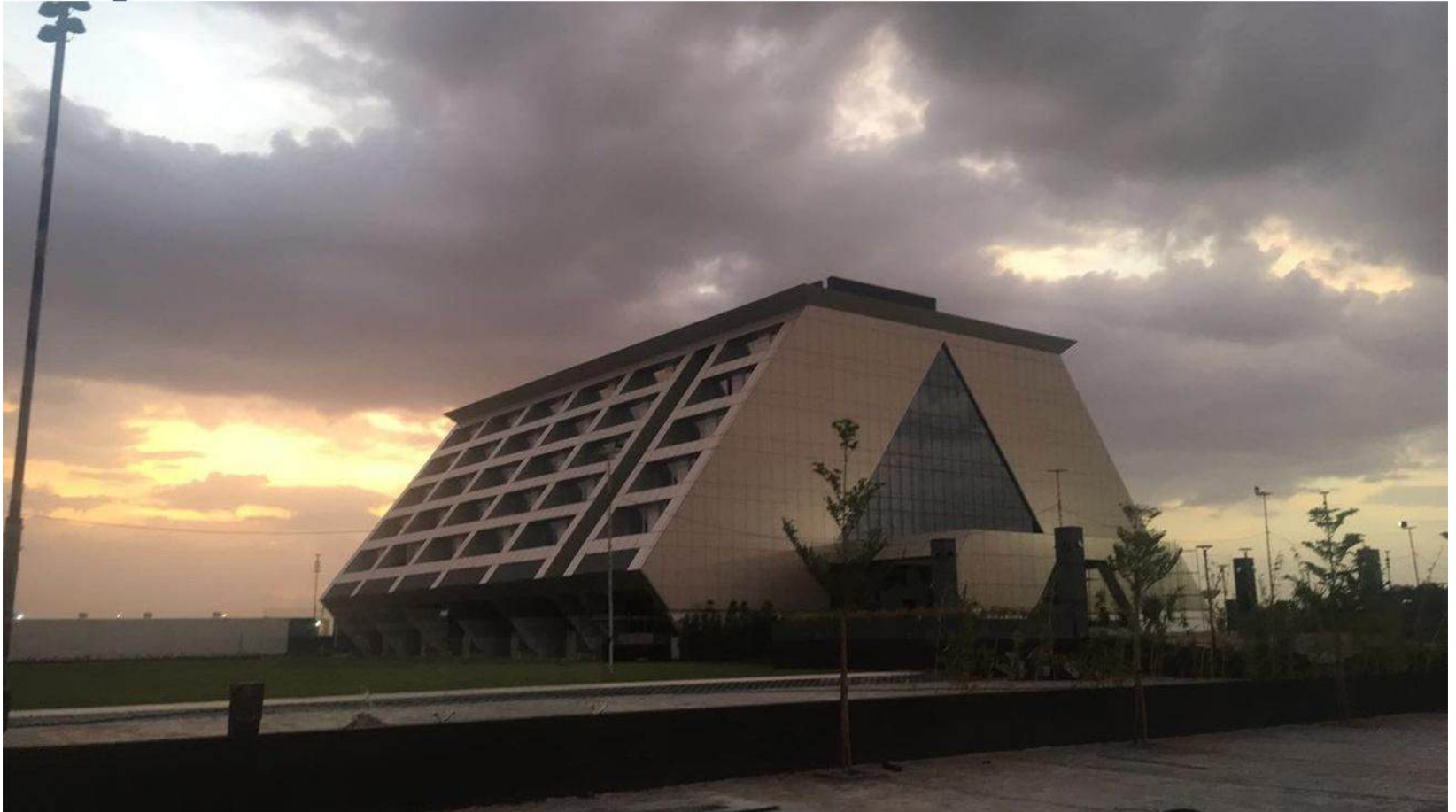
Indore (Madhya Pradesh)



Skeleton Consultants Pvt.Ltd.

# Golden Leaves Convention Centre

Indore (Madhya Pradesh)





# MDPH (Zed Black)

Indore (M.P)



Skeleton Consultants Pvt.Ltd.



# MDPH (Zed Black)

Indore (M.P)



Skeleton Consultants Pvt.Ltd.

# MDPH (Z black) at Indore



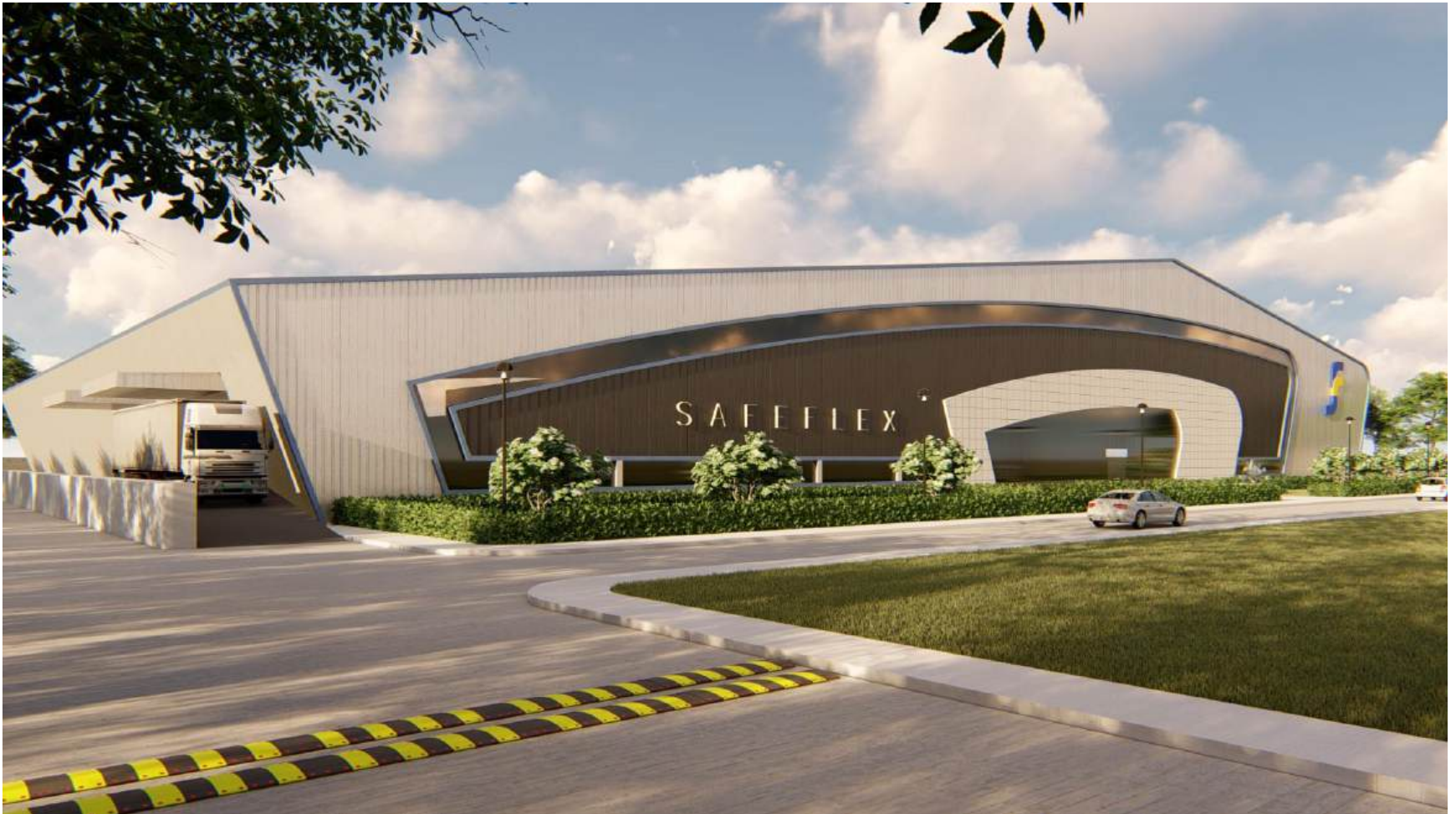


# MDPH (Z black) at Indore





# SAFEFLEX INTERNATIONAL, PITHAMPUR



# SAFEFLEX INTERNATIONAL, PITHAMPUR



# Endura Fab Pvt. Ltd., Pithampur



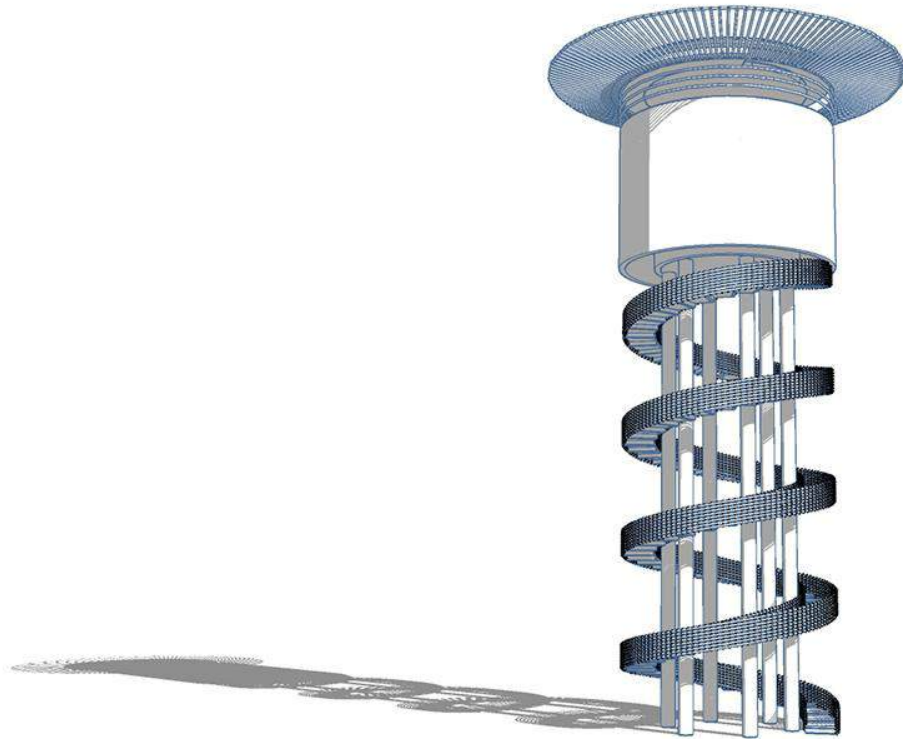


# CROMPTON GREAVES, KUNDAIM, GOA



# Bamboo Research & Training Centre

Chandrapur, Maharashtra



Skeleton Consultants Pvt.Ltd.

# Bamboo Research & Training Centre

Chandrapur, Maharashtra



Skeleton Consultants Pvt.Ltd.



# Bamboo Research & Training Centre

Chandrapur, Maharashtra





# Bamboo Research & Training Centre

Chandrapur, Maharashtra



# Bamboo Research & Training Centre

Chandrapur, Maharashtra





# BRILLIANT TECHNOLOGY & CONSTRUCTION PVT. LTD., INDORE

## Commercial Complex at Plot No. 8



# BRILLIANT TECHNOLOGY & CONSTRUCTION PVT. LTD., INDORE

## Commercial Complex at Plot No. 9



# BRILLIANT TECHNOLOGY & CONSTRUCTION PVT. LTD., INDORE

## Convention Hall at Plot No. 5





# BCM PARADISE, INDORE

## Highrise Building G+14 (4 Blocks)



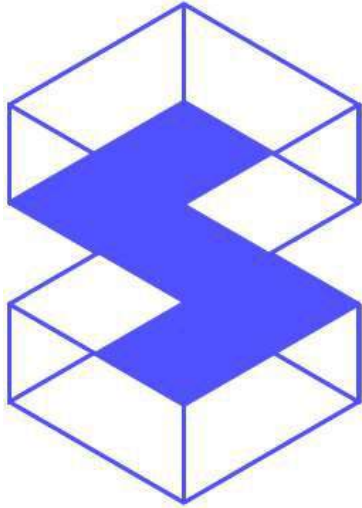
# SHIVA STATUE AT NATHDWARA



# HANUMAN STATUE AT SOLAN







# THANKS

## **Skeleton Consultants Pvt. Ltd.**

Regd. Office - 412, "Satguru Parinay"  
Plot No. 5, P.U.-3, Commercial  
Scheme No. 54, Opp. C-21 Mall  
Near Pakiza Retail, Indore (M.P.) 452010  
Ph.- 0731-2551267, 4911020  
E-mail- [skeletonindore@skeleton.in](mailto:skeletonindore@skeleton.in)

NCR Delhi - A-75, Second Floor  
Sector#5, Noida-201301  
Ph.- 0120-4222642  
E-mail-[skeletondelhi@skeleton.in](mailto:skeletondelhi@skeleton.in)

South-India Office – Max Medics  
Building, Opp. St. George Baslica  
Church, Angamaly, Earnakulam,  
Kerala-683572