

Skeleton

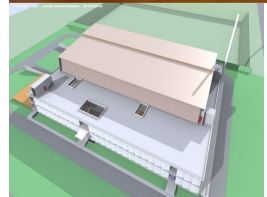
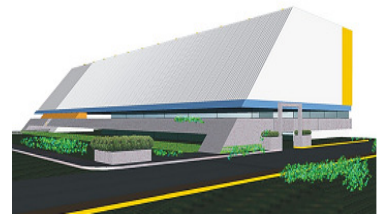
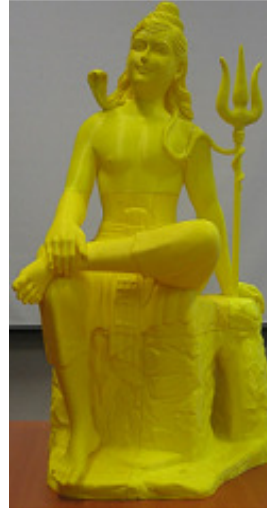
Skeleton Consultants Pvt. Ltd.

(ESCOM Consultants Pvt. Ltd., merged)



Integrated Project Consultants

Structural Design, PEB & Wind Engg Consultants



****SERVICES OFFERED****

INDUSTRIAL SECTOR:

MASTER PLANNING, ARCHITECTURE, INTERIORS, STRUCTURE, LANDSCAPES, MEP+FIRE SERVICES

BUILDING & STRUCTURES:

RC STRUCTURAL DESIGN & DETAILING, STEEL STRUCTURES DESIGN & DETAILING, PRE ENGINEERED BUILDINGS, PROOF CONSULTANCY, WIND ENGINEERING CONSULTANTS, RC & STEEL BRIDGE DESIGN/PROOF CHECKING, STRENGTH ASSESSMENT & REHABILITATION DISTRESSED BUILDING, WIND TUNNEL DESIGN CONSULTANTS

Contact: Directors

Er. Arun Sodhani: arun.sodhani@skeleton.in, mobile: 09752531945, (INDORE)

Er. (Dr) Abhay Gupta: abhay.gupta@skeleton.in, Phone: 09871844932, (NOIDA)

Er. Jayesh Kumar Jain: jk.jain@skeleton.in, mobile: 09329548742, (INDORE)

Delhi-NCR Office: A-75, SECOND FLOOR, SECTOR-5, NOIDA –201301, Email: skeletondelhi@skeleton.in

Indore Office: 412, Satguru Parinay, Op. C-21 Mall, Near Pakiza Retail, INDORE (MP) 452010

Tel: 0120-2425006, 0731-2551267, Email: skeletonindore@skeleton.in

BENGALURU Office: 65/1, 5th Main, Ganga Nagar, RT Nagar, BANGALORE-560032 India.

Office Incharge: Mr. Babumon PJ +91-9958003108: www.skeleton.in

Introduction

M/s Skeleton Consultants Pvt. Ltd.(SCPL) & M/s ESCOM Consultants Pvt. Ltd. (ECPL) are sister concerns, working in the area of Integrated Project & Engineering consultancy since last more than 30 years.

Er. RK Gupta, a senior civil engineer and practicing consultant started RKGupta & Asso. at Indore in early Eighties which was later converted to RKGA Consultants P. Ltd. Er. Arun Sodhani, a post-graduate civil/structural engineer joined RKGA in 1987, after serving as teaching faculty at SGSITS Indore for about Six years. SCPL was started in 1989 by Er. Arun Sodhani & Er. RK Gupta, as a subsidiary of RKGA Consultants P. Ltd. Indore, initially to provide structural consultancy services and later on in 2012 converted to a full-fledged Integrated Project Consultancy organization, having offices in Indore and Delhi. Er. Jayesh Jain & Dr. Abhay Gupta worked as teaching faculty at SGSITS Indore from 1983 to 2007. Er. Jayesh Jain joined SCPL in 2007 and Dr. Abhay Gupta shifted to Noida as Vice-President in Era group. He then moved to MNC EiGEN (UK) as Vice-President (Design) at Gurgaon office. Later, Dr. Abhay Gupta started ECPL in Jan. 2011 along with well-known architect firm DFA. In Jan. 2014, Dr. Abhay Gupta became a part of SCPL and all the business and staff of ECPL was merged with SCPL and moved in new premises in Noida (Delhi-NCR). Recently SCPL has started a project office in Bangalore also. As on today we have offices at Indore, Noida (Delhi-NCR) and Bangalore.

Our Delhi-NCR office is situated in Sector # 5 NOIDA with an area of approximately 4000 sq. ft. The office is equipped with all the sophisticated modern facilities. SCPL Noida has 35 Desktop computers, 4 laptops, 1 Multi-function print-scan-copier, 2 Plotters, Printers etc. The company has its own library which consists of various national and international codes, handbooks and standard reference books of Civil/Structural Engineering.

Several Eminent Structural Engineers & Academicians are our Advisors. The list includes Prof. Prem Krishna (IIT Rourkee) and Dr.Supratic Gupta (IIT Delhi)

Our Vision

To be the Best and most efficient Integrated Project consultant & Engineering service provider in the area of Industries, Buildings, Structure and infrastructure field delivering exceptional value to its stakeholders consistently.

Our Mission

- ♦ Our mission is acquisition and application of knowledge, integration of diverse working experience with the staff and thereby succeeds in service delivery from winning the confidence of client through proven performance
- ♦ Our mission is to excel fairly in all natural Competitions, through our performance, through integrity, entrepreneurship, and the ability to grow with qualities that support the client's objectives.

We have two major Divisions. One is for **Industrial Sector** where we provide complete integrated project consultancy right from concept planning till completion including PMC. The second one is **Building Sector** where we provide specialized Structural Engineering Consultancy Services for RCC & Steel building and other structures like: Sports Facilities, Hotels, PEB structures, Mix Development, Concrete Statue, Earthquake Engineering practice, Wind Engineering, Condition assessment & Health monitoring of Structures, Repair, Rehabilitation and Retrofitting, Proof checking, Peer Review & Value Engineering.

- ♦ Various technical and other magazines that SKELETON subscribe for update the Engineering knowledge, as listed below:
 - Steel structures & metal buildings
 - Indian Concrete Journal
 - Insdag's steel in construction
 - Indian Geotechnical Journal

- ♦ Professional Associations where SKELETON's staff are members:
 - Institution of Engineers (India)
 - Indian Geotechnical Society
 - Indian Association of Structural Engineers (IAStructE).
 - International Network of Women Engineers & Scientists (INWES)
 - Indian Geotechnical Society, Delhi Chapter (IGS)
 - Indian Society for Wind Engineering (ISWE)
 - Indian Society of Earthquake Technology (ISET)
 - Indian Society for Technical Education
 - Institution of Vastu Science (India)
 - Association of Structural Engineers, Indore
 - Indian Road Congress
 - Institute for Steel Development & Growth (INSDAG)
 - Indian Society of Remote Sensing
 - SGSITS Alumni Association
 - IIT Roorkee Alumni Association
 - Indian Society for Construction Materials & Structures

ASSOCIATES

- ESCOM CONSULTANTS PVT. LTD
A-75, Second Floor, Sector # 5, Noida (Delhi-NCR) 201301
Ph.: 0120-2425006, 2425007
Contact: Dr. Abhay Gupta - 09871844932
E-mail : abhay.gupta@skeleton.in
Website: www.skeleton.in
- HVAC CONSULTANTS

Degree Day Engineers
EW-58, Scheme No. 94-E
Opp. Mayur Hospital
Ring Road, Indore-452001
- MEP CONSULTANTS

PKV Consulting Engineers (P) Ltd.
815-C, DDA Flats, East of Loni Road, Delhi-110093

Prolific MEP Consultant OPC Pvt. Ltd.
3331, 3rd Floor, Angel Mega Mall Kaushambi,
Ghaziabad, U.P.-201010
- ENVIRONMENTALCONSULTANTS
Distington Engineers & Consultants Pvt. Ltd.
7/1, Usha Ganj, Main Road, Indore
- SAMANVAY VASTU CONSULTANCY
Building Biologist & Vastu Consultants
E-403 Krishna Apra, Sector-61, Noida

INDUSTRIAL SECTOR SERVICES

We offers all or part of the following comprehensive services as per the needs of clients.

Project Analysis

- Site Analysis
- Land use studies
- Site planning
- Space & occupancy requirements.
- Budget & Scheduling
- Functional analysis.

Design Services

- Master planning
- Conceptual studies
- Working drawings.
- Construction documents.
- Civil
- Structural
- Electrical
- Heating, Ventilation, Air Conditioning & Utilities Planning.

Interior Systems

- Space utilization studies
- Interior design specifications
- Working drawings
- Furniture layout & detailing
- Electrical & HVAC Drawings

Construction Management

- Preparing tender documents.
- Evaluation of bids.
- Preparing comparative statements.
- Negotiations with the vendors/construction agencies.
- Construction scheduling.
- Material sourcing.
- Visiting sites for quality control
- Finalization of bills of working agencies

EXPERIENCE

WORKED FOR

- AUTOMOBILE AND ANCILLARY INDUSTRIES
- TEXTILE INDUSTRIES
- ENGINEERING INDUSTRIES
- PHARMA INDUSTRIES
- CHEMICAL AND FERTILIZER INDUSTRIES
- EDIBLE OIL INDUSTRIES
- PACKAGING INDUSTRIES
- COMMERCIAL & RESIDENTIAL
- WATER TREATMENT PLAN
- WATER TANKS
- SILO
- OTHER MISC. UNITS

GROWTH

The Business of Firm is Continuously Growing.

The Turnover since Last Four years are as under -

- 2011-2012 : 335.13 Lacs
- 2012-2013 : 363.75 Lacs
- 2013-2014 : 445.92 Lacs
- 2014-2015 : 508.00 Lacs

The firm has made permanent clients by virtue of Services. Important clients who have engaged The firm continuously over last 15 years are -

OUR ESTEEMED CLIENTS

Mahindra Intertrade Ltd.

Caparo Engg. India Pvt. Ltd.

Khaitan Chemicals & Fert. Ltd.

Tata Exports Ltd. Gajra Gears Ltd.

Bhaskar Industries Ltd.

IPCA laboratories Ltd.

Kriti Industries Ltd.

JBM Group

ISGEC Group of Industries.

Jaicorp Industries Ltd.

Bestex MM (I) Pvt. Ltd.

Somany Ceramics Limited

Anubha Industries Pvt. Ltd.

VE Commercial Vehicles Ltd.
(Formerly Known as Eicher Motors Ltd.)

Pratibha Syntex Ltd.

Kinetic Honda Motors Ltd.

Caparo Maruti Ltd.

Dewas Soya Ltd.

Flexituff Industries Ltd.

K.S. Oils Ltd.

Sonic Biochem Extraction Ltd. (Matlani Group)

Mahle Engine Components India Pvt. Ltd.

Neel Metal Products Ltd.

Musashi Auto Parts India Pvt. Ltd.

Iceberg Foods Ltd.

Adani Group



GEOGRAPHICAL LOCATIONS OF WORKS.



Pithampur - Indore M.P.
Ratlam - M.P.
Bhopal - M.P.
Gwalior - M.P.
Nimrani - M.P.
Guna - M.P.
Greater Noida - NCR
Bawal - NCR
Gurgaon - NCR
Haridwar - Uttarnchal
Panthnagar - Uttarnchal
Kari - Gujrat
Bhuj - Gujrat
Pune - Maharashtra
Amarwati - Maharashtra
Hingoli - Maharashtra
Kota - Rajasthan
Khushkheda Rajasthan
Jamshedpur - Jharkhand
Singur - W. Bengal
Kashipur - Uttarakhand
Jalandhar - Punjab
Silvassa - D & N Haveli

Galle - Sri lanka
Harare - Zimbabwe
Ishwardeep - Bangladesh





Client

Mahindra Steel Service Center Ltd.

Project

Factory Bldg.

Location

Mandideep (M.P.)

Construction

2009-10

Year & Period

Contractor

Sandeep Nanavati, Vadodra

Construction

Cost

705 Lacs





Client	Mahle Engine Component India Pvt. Ltd.
Project	Foundry Project
Location	Pithampur
Construction Year & Period	2012-13
Contractor	UPCL, Indore
Construction Cost	1186.50 Lac





Client	VE Commercial Vehicles Ltd.
Project	Central Store
Location	Pithampur Sector-I (M.P.)
Construction Year & Period	2008-09
Contractor	Sita Homes Pvt. Ltd.
Construction Cost	795 Lacs



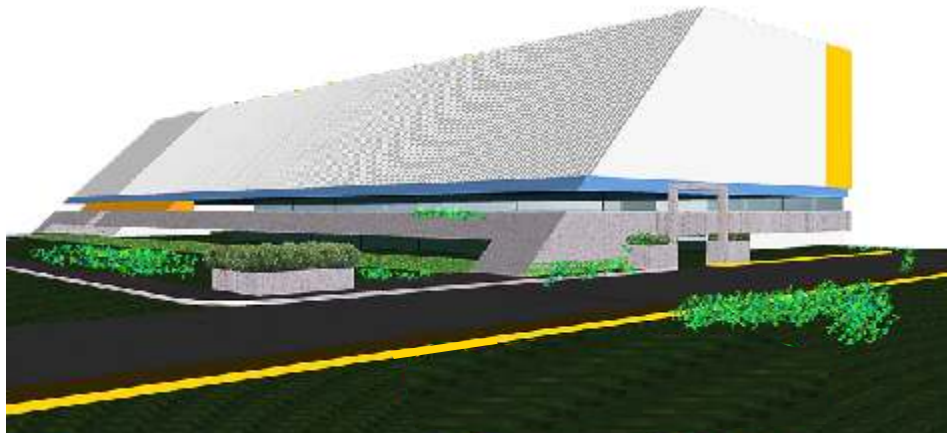
Client	Caparo Engineering (I) Pvt. Ltd., Pithampur
Project	Construction of Press Shop, Weld Shop, Adm Office, Ancillary Strut. & Site Development. Pithampur (M.P.)
Location	Pithampur (M.P.)
Construction Year & Period	2005
Contractor	UPCL, Indore
Construction Cost	735 Lacs





Client	Caparo Engineering (I) Pvt. Ltd., Pithampur
Project	Long Member Shed, Adm Office, Ancillary Struct. & Site Development.
Location	Pithampur (M.P.)
Construction Year & Period	2005
Contractor	Rattansingh Builders Delhi.
Construction Cost	325 Lacs





Client	Caparo Maruti Ltd. Bawal.
Location	Bawal (Haryana)
Project	Construction of Press Shop, Weld Shop, Adm Office, Ancillary Strut. & Site Development.
Construction Year & Period	July'04 to March'05
Contractor	(9 Months)
Construction Cost	R.B. Builders, Bhiwadi' 400 Lacs
Project	Construction of Press Shop & Weld Shop (Expansion-I)
Construction Year & Period	Sept'05 to April 06
Contractor	(8 Months)
Cost	R.B. Builders, Bhiwadi' 200 Lacs
Project	Construction of Press Shop & Weld Shop (Expansion-II)
Construction Year & Period	Under Prograss
Contractor	K.S.M. Bashir Mohd. & Sons, Lucknow.
Cost	1110 Lacs





Client	Flexituff International Ltd.
Project	SEZ, Pithampur Construction of Jumbo Bag Plant
Location	Pithampur
Construction Year & Period	2002-03 (15 Months)
Contractor	Eco Build Indore
Construction Cost	750 Lacs





Client
Project

Location
Construction
Year & Period
Contractor
Construction
Cost

Flexituff International Ltd
Construction of Jumbo
Bag Plant
Kashipur (Uttarkhand)
2008-10

Shri Balaji Builders, Bhiwadi
3320 Lacs





Client	Pratibha Syntex Ltd
Project	Garment Unit
Location	Sez, Pithampur
Construction Year & Period	2008-2009
Contractor	Rattan Singh Builders Delhi
Construction Cost	715 Lacs





Client	K.S. Oils Ltd.
Project	Oil Extraction Plant
Location	Guna (M.P.)
Construction Year & Period	2008-2009 / 2009-2010
Contractor	R.S. Builders, Delhi
Construction Cost	4500 Lacs





Client	Sonic Biochem Extractions Ltd.
Project	Construction of Bldgs For Lecithin Powder, Liquid, Lab, Adm, R&D Utility etc.
Location	Sez, Pithampur
Construction Year & Period	Under Progress
Contractor	Eco Build, Indore
Construction Cost	832 Lacs





Client

**Vishal Fabricators
Pvt. Ltd**

Project

Unit - II Main Plants &
Plating & Brazing Plant, ETP
Security, Site Development
Indore

Location

Construction

2008

Year & Period

Contractor

Creative Construction (Indore)
Pvt. Ltd.

Construction

Cost

300 Lacs





Client	Khaitan Chemicals & Fertilizers Ltd.
Project	Construction of Single Super Phosphate Plant ADM Block, Ancillary Structure & Site Development works
Location	Nimbahera (Rajasthan)
Construction Year & Period	2005-06
Contractor	Creator Engg.
Construction Cost	434 Lacs





Client	Creative Propack Ltd
Project	Packaging Unit (Main Plant Utility & Site Development)
Location	Sez, Pithampur (M.P.)
Construction Year & Period	Under Progress
Contractor	M & A Buildcon Pvt. Ltd.
Construction Cost	200 Lacs



PITHAMPUR AUTO CLUSTER Ltd.
At Mhow (M.P.)

Project	Phase-1 Construction of ToolRoomADM,LT&D GandtechnicalServicearea	Construction Year & Period	2008-2009
		Contractor	Newchem Engg. Indore
Location	Mhow(M.P.)	Construction Cost	870 Lacs



Project	Phase-2 Industrial Training Institute.	Construction Year & Period	2009
		Contractor	-----
Location	Mhow(M.P.)	Construction Cost	450 Lacs

Mahindra Steel Service Center Ltd.
Mandideep (M.P.)

Project Location	Factory Bldg. Mandideep (M.P.)	Construction Year & Period	2009-10
		Contractor	Sandeep Nanavati Vadodra
		Construction Cost	705 Lacs



ISGEC
At Bawal (Haryana)

Project	Tool Room, Adm Office Ancillary Struct. & Site Development	Construction Year & Period	2011
		Contractor	Three-S Constructions
Location	Bawal (Haryana)	Construction Cost	910 Lacs



SHAKTI PUMP (INDIA) Ltd.
At Pithampur (M.P.)

Project Location	Manufacturing of Motor Pithampur (M.P.)	Construction Year & Period	2011-12
		Contractor	Creative Construction (Indore) Pvt. Ltd.
		Construction Cost	270 Lacs



K.M. Crown Welding Consumables Pvt. Ltd.
At Dewas (M.P.)

Project
Location

Stick & Co₂ electrode
Dewas

Construction
Year & Period
Contractor

2007
Ashok Const. Dewas

Construction
Cost

550 Lacs



Vishal Fabricators Pvt. Ltd.
At Indore (M.P.)

Project

Unit - II Main Plants &
Plating & Brazing Plant, ETP
Security, Site Development
Indore (M.P.)

Location

Construction
Year & Period
Contractor

2008
Creative Construction
(Indore) Pvt. Ltd.

Construction
Cost

300 Lacs



Mahindra UGINE Steel Co. Ltd.
At Pantnagar (Uttarakhand)

Project

Factory Building

Location

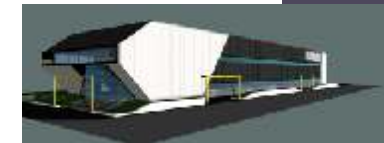
Pantnagar (U.K.)

Construction
Year & Period
Contractor

2010-11
Shri Balaji Builders

Construction
Cost

730 Lacs



Shree Tirupati Balajee FIBC Co. Pvt. Ltd.
At SEZ, Pithampur (M.P.)

Project

Factory Building

Location

SEZ, Pithampur

Construction
Year & Period
Contractor

2011
Eco Build

Construction
Cost

370 Lacs



Mahindra Auto Steel Pvt. Ltd.
At Chakan, Pune

Project

Factory Building

Location

Chakan

Construction
Year & Period
Contractor

Under Progress
Ratnarup Projects
Pvt. Ltd., Pune

Construction
Cost

1431 Lacs



ENGINEERING INDUSTRY



Mahle Engine Component Inida P. Ltd.
At Pithampur (M.P.)

Project	Cam Shaft Project	Construction Year & Period	2008
		Contractor	UPCL Indore
Location	Pithampur (M.P.)	Construction Cost	1250 Lacs



Mahle Engine Component Inida P. Ltd.
At Pithampur (M.P.)

Project	Cam Shaft Expansiot	Construction Year & Period	2011-12
		Contractor	UPCL Indore
Location	Pithampur (M.P.)	Construction Cost	950 Lacs



Mahle Engine Component Inida P. Ltd.
At Pithampur (M.P.)

Project	Foundry Project	Construction Year & Period	2012-13
		Contractor	UPCL Indore
Location	Pithampur (M.P.)	Construction Cost	1186.50 Lacs



Gajra Differential Gears Ltd.
At Dewas(M.P.)

Project	Manufacturing of Differential Gears	Construction Year & Period	May'99 to Jan'02 (Makhija Const.)
		Contractor	2004 (Eco-Build)
Location	Kshipra (M.P.)	Construction Cost	420+100 Lacs

BESTEX MM (I) Pvt. Ltd.
At Khushkhera (Raj.)

Project	Main Factory, LT DG, R.O. Shed, Office, Security, Press Trench & Development	Construction Year & Period	2008
		Contractor	Three-S Const.
Location	Khushkhera (Raj.)	Construction Cost	4000 Lacs



AUTOMOBILES & ANCILLARIES INDUSTRY



VE Commercial Vehicles At Pithampur Sector-I (M.P.)

Project Location	Central Store Pithampur Sector-I (M.P.)	Construction Year & Period	2008-09
		Contractor	Sita Homes Pvt. Ltd. Indore
		Construction Cost	795 Lacs



VE Commercial Vehicles At Pithampur Sector-I (M.P.)

Project Location	Reliability Lab Pithampur Sector-I (M.P.)	Construction Year & Period	2010
		Contractor	Sita Homes Pvt. Ltd. Indore
		Construction Cost	360 Lacs



VE Commercial Vehicles At Pithampur Sector-I (M.P.)

Project Location	Paint Shop Pithampur Sector-I (M.P.)	Construction Year & Period	2011-12
		Contractor	Shri Balaji Builders Bhiwadi
		Construction Cost	2900 Lacs



VE Commercial Vehicles At Pithampur Plant-II (M.P.)

Project Location	Development & Modification Pithampur (M.P.)	Construction Year & Period	2011-12
		Contractor	Lalit Patni Civil Engg.
		Construction Cost	975 Lacs

VE Commercial Vehicles At Pithampur Sector-I (M.P.)

Project Location	Cab Weld & CMS Exp. Pithampur Sector-I (M.P.)	Construction Year & Period	2012-13
		Contractor	Sita Homes Pvt. Ltd.
		Construction Cost	785 Lacs



VE Commercial Vehicles
At Pithampur Sector-I (M.P.)

Project	Industrial Office CSPD Building Guest House LMD/PDI/Mc shop PDD Office Building Chasis Painting & Method Shop Axle Line High Rise Tyre Yard	Location	Pithampur Sector-I (M.P.)
---------	--	----------	---------------------------

CAPARO ENGINEERING (I) Pvt. Ltd.
At Pithampur (M.P.)

Project	Construction of Press Shop, Weld Shop, Adm Office, Ancillary Strut. & Site Development. Pithampur (M.P.)	Construction Year & Period	1999-2005
Location		Contractor	UPCL, Indore
		Construction Cost	735 Lacs



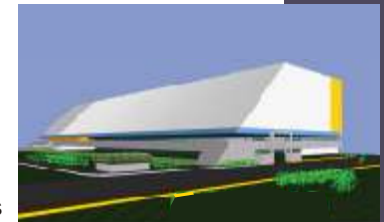
CAPARO ENGINEERING (I) Pvt. Ltd.
At Pithampur (M.P.)

Project	Long Member Shed, Adm Office, Ancillary Struct. & Site Development. Pithampur (M.P.)	Construction Year & Period	2005
Location		Contractor	Rattansingh Builders Delhi
		Construction Cost	325 Lacs



CAPARO MARUTI Ltd.
At Bawal (Haryana)

Project	Construction of Press Shop, Weld Shop, Adm Office, Ancillary Strut. & Site Development. Bawal (Haryana)	Construction Year & Period	July'04 to Mar'05' (R.B. Builders)
Location		Contractor	Sep'05 to Apr'06 (R.B. Builders)
			Under Progress
		Construction Cost	K.S.M. Bashir Mohd. & Sons 400+200+1110 Lacs



CAPARO ENGINEERING (I) Pvt. Ltd.
At Greater Noida (U.P.)

Project	Construction of Press Shop, Weld Shop, Adm Office, Ancillary Strut. & Site Development. Greater Noida	Construction Year & Period	May'05 to Feb'06 (K.S.M. Bashir Mohd. & Sons)
Location		Contractor	Under Progress (P.K. Builders)
		Construction Cost	600+600 Lacs



AUTOMOBILES & ANCILLARIES INDUSTRY



Neel Metal Products Ltd.
At Gurgaon (Haryana)

Project	Expansion work	Construction Year & Period	Under Progress
Location	Gurgaon (Haryana)	Contractor	Dee Kay Buildcon Pvt. Ltd.
		Construction Cost	1580 Lacs

Neel Metal Products Ltd.
At Manesar (Haryana)

Project	Expansion work	Construction Year & Period	Under Progress
Location	Manesar (Haryana)	Contractor	Dee Kay Buildcon Pvt. Ltd.4.
		Construction Cost	810 Lacs

Neel Metal Products Ltd.
At Bengaluru

Project	Factory Building	Construction Year & Period	Under Progress
Location	Narsapur, Malur Road, Kolar Taluk, Bengaluru	Contractor	S. Subrahmanyam Construction Co., Chennai
		Construction Cost	820 Lacs

Neel Auto Pvt. Ltd.
At Hosur (T.N.)

Project	Factory Building	Construction Year & Period	Under Progress
Location	Harita, Krishnagiri, Hosur (T.N.)	Contractor	Nathan Civil Engineers & Painting Contractors, Hosur
		Construction Cost	251 Lacs

JBM AUTO Ltd.
At Pithampur Sector-3 (M.P.)

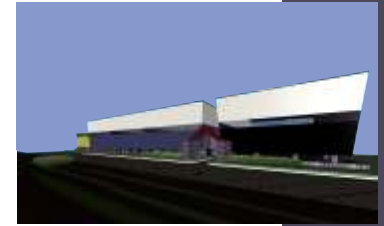
Project	Factory Building	Construction Year & Period	Under Progress
Location	Pithampur Sector-3 (M.P.)	Contractor	Rattan Singh Builders Pvt. Ltd.
		Construction Cost	1400 Lacs

AUTOMOBILES & ANCILLARIES INDUSTRY



CAPARO ENGINEERING (I) Pvt. Ltd.
At Jamshedpur (Jharkhand)

Project	Construction of Press Shop, Weld Shop, Adm Office, Ancillary Strut. & Site Development.	Construction Year & Period	2008
Location	Jamshedpur (Jharkhand)	Contractor	S.N. Singh & Bros. Jamshedpur.
		Construction Cost	1590 Lacs



CAPARO ENGINEERING (I) Pvt. Ltd.
At Singur (W. Bengal)

Project	Construction of Press Shop, Weld Shop, Adm Office, Ancillary Strut. & Site Development.	Construction Year & Period	2008
Location	Singur (W. Bengal)	Contractor	ATW Nirman Kolkata
		Construction Cost	1010 Lacs



DEWAS SOYA Ltd.
At Dewas (M.P.)

Project	SEP & Refinery	Construction Year & Period Contractor	1993-94 Era Construction
Location	Dewas (M.P.)	Construction Cost	450.00 Lacs

KHAITAN AGRO
At Ratlam (M.P.)

Project	DOC Godown, SEED Precleaner, Work Shop etc. Store etc. With Development	Construction Year & Period Contractor	Creator Engg.
Location	Ratlam (M.P.)	Construction Cost	345.00 Lacs



RICO AGRO OILS Ltd.
At Bundi (Raj.)

Project	DOC Godown, SEED Precleaner, Work Shop etc. Store etc. With Development	Construction Year & Period Contractor	1992-93 Era Construction
Location	Bundi (Raj.)	Construction Cost	316.00 Lacs



GUJRAT AMBUJA PROTEINS Ltd.
At Pithampur (M.P.)

Project	Soya Bean Extraction Plant	Construction Year & Period Contractor	1992-93 B.M. Const.
Location	Pithampur (M.P.)	Construction Cost	340.00 Lacs

K.S. OILS Ltd.
At Morena (M.P.)

Project	Edible Oil Refinery & Site Development Works.	Construction Year & Period Contractor	2001-02 Sharda Construction
Location	Morena (M.P.)	Construction Cost	230.00 Lacs



EDIBLE OIL PLANTS



KRITI INDUSTRIES

At Dewas (M.P.)

Project	DOC, Prep, SEP & Site Development Works	Construction Year & Period	2007-08 10 Months
		Contractor	Eco Build Indore
Location	Dewas (M.P.)	Construction Cost	384 Lacs



K.S. OILS Ltd.

At Guna (M.P.)

Project	Oil Extraction Plant	Construction Year & Period	2008-2009 / 2009-2010
		Contractor	R.S. Builders Delhi.
Location	Guna (M.P.)	Construction Cost	4500 Lacs



K.S. OILS Ltd.

At Kota (Raj.)

Project	Oil Extraction Plant	Construction Year & Period	2008-2009 / 2009-2010
		Contractor	Shri Balaji Build. Bhiwadi
Location	Kota (Raj.)	Construction Cost	1700 sq.m



K.S. OILS Ltd.

At Ratlam (M.P.)

Project	Oil Extraction Plant	Construction Year & Period	2008-2009 / 2009-2010
		Contractor	Creator Engg. Indore
Location	Ratlam (M.P.)	Construction Cost	1200 Lacs

Bergwerff Organic (I) Pvt. Ltd.

At SEZ, Pithampur

Project	Soya Plant	Construction Year & Period	Under Progress
		Contractor	Transtech Creation Indore
Location	SEZ, Pithampur (M.P.)	Construction Cost	300 Lacs

EDIBLE OIL PLANTS



BHASKAR INDUSTRIES Ltd.
At Hingoli (Maharashtra)

Project Location	Soyabean Plant (Expansion) Hingoli (Maharashtra)	Construction Year & Period Contractor	2010
		Construction Cost	190 Lacs

BHASKAR INDUSTRIES Ltd.
At Amrawati (M.P.)

Project Location	Soyabean Plant (Expansion) Amrawati (M.P.)	Construction Year & Period Contractor	2010
		Construction Cost	235 Lacs



BHASKAR INDUSTRIES Ltd.
At Biaora (M.P.)

Project Location	Soyabean Plant (Expansion) Biaora	Construction Year & Period Contractor	2009-10 R.K. Construction
		Construction Cost	1000 Lacs

BHASKAR SOYA
At Dewas (M.P.)

Project Location	Expansion Dewas (M.P.)	Construction Year & Period Contractor	2009 Capital Construction Pvt. Ltd.
		Construction Cost	230 Lacs

SHARDA SOLVENT
At Shivpuri (M.P.)

Project Location	Expansion Shivpuri (M.P.)	Construction Year & Period Contractor	2009
		Construction Cost	165 Lacs

EDIBLE OIL PLANTS



PRATIBHA SYNTEX Ltd.
At Pithampur (M.P.)

Project	Spinning Mill (Unit-2)	Construction Year & Period	1999-2000
Location	Pithampur (M.P.)	Contractor	Skyline, Delhi
		Construction Cost	



Project	Knitting Dyeing & Garment	Construction Year & Period	2005-2006
Location	Pithampur (M.P.)	Contractor	Skyline, Delhi
		Construction Cost	850.00 Lacs



Project	Open end	Construction Year & Period	2006-07
Location	Pithampur (M.P.)	Contractor	Eco Build Indore
		Construction Cost	1125.00 Lacs



Project	MVS & MJS	Construction Year & Period	2007-08
Location	Pithampur (M.P.)	Contractor	UPCL, Indore
		Construction Cost	1850.00 Lacs



Project	12000 Spindles	Construction Year & Period	2007-08
Location	Pithampur (M.P.)	Contractor	UPCL, Indore
		Construction Cost	



TEXTILES / SPINNING UNITS



PRATIBHA SYNTEX Ltd.
At SEZ, Pithampur (M.P.)

Project	Garment Unit	Construction Year & Period	2007-08
Location	SEZ, Pithampur (M.P.)	Contractor	Rattansingh Builders, Delhi
		Construction Cost	715 Lacs



BHASKAR INDUSTRIES Ltd.
At Mandeeep (M.P.)

Project	Indigo Dyeing Plant	Construction Year & Period	2003
Location	Mandideep (M.P.) 3460 Sqm.	Contractor	Eco Build Indore
		Construction Cost	80.00 Lacs

Project	Spinning Mill	Construction Year & Period	1995-96
Location	Mandideep (M.P.)	Contractor	Raghuvanshi Builders, Bhopal
		Construction Cost	320.00 Lacs

Project	Weaving Unit	Construction Year & Period	1998
Location	Mandideep (M.P.)	Contractor	Raghuvanshi Builders, Bhopal
		Construction Cost	150.00 Lacs

MAHIMA PURESPUN
At Pithampur (M.P.)

Project	Spinning Mill	Construction Year & Period	2005-06
Location	Pithampur (M.P.)	Contractor	Rattansingh Builders, Delhi
		Construction Cost	460.00 Lacs

TEXTILES / SPINNING UNITS



BURHANPUR TEXTILES Ltd.
At Burhanpur (M.P.)

Project	FACTORY BUILDING	Construction Year & Period	2011
Location	Burhanpur (M.P.)	Contractor	Rajendra Chouhan Indore
		Construction Cost	450 Lacs



CIL TEXTILES Pvt. Ltd.
At Mhow (M.P.)

Project	FACTORY BUILDING	Construction Year & Period	2010-11
Location	Shiv Nagar, Khandwa Road, Mhow (M.P.)	Contractor	Abhinav Infrabuild Pvt. Ltd.
		Construction Cost	536 Lacs

ANUBHA INDUSTRIES Pvt. Ltd.
At Surat (Gujarat)

Project	FACTORY BUILDING	Construction Year & Period	Under Progress
Location	Palsana Industrial Area, Surat (Gujarat)	Contractor	Shri Balaji Buildmate Pvt. Ltd.
		Construction Cost	2640 Lacs



A-ONE INDUSTRIES At Haridwar (Uttaranchal)

Project	Construction of Factory Building for Manufacturing of Color Coated Sheets	Construction Year & Period) Contractor	2006-07 P.K. Builders
Location	Haridwar (Uttaranchal)	Construction Cost	135 Lacs

ERA METAL BUILDING SYSTEMS Ltd. At Pantnagar (Uttaranchal)

Project	Construction of Factory Building for Manufacturing of Pre Engineering Structures	Construction Year & Period) Contractor	May'06 to Feb'07 (10 Month) Era Construcion Pvt.Ltd.
Location	Pant Nagar (Uttaranchal)	Construction Cost	1800 Lacs



IPCA LABORATORIES Ltd.
At Ratlam (M.P.)

Project	Bulk Drug Unit Expansion	Construction Year & Period Contractor	1998-2009 Various Contractors
Location FloorArea	Ratlam (M.P.)	Construction Cost	600 Lacs



SONIC BIOCHEM EXTRACTIONS Ltd.
At SEZ, Pithampur (M.P.)

Project	Construction of Lecithin & Various Items, Including Main Plant Godowns, Lab Workshop, R&D, ADM. Block etc	Construction Year & Period	2007-08
Location	SEZ, Pithampur (M.P.)	Contractor	Eco Build Indore
		Construction Cost	832 Lacs



SONIC BIOCHEM EXTRACTIONS Ltd.
At Mandideep (M.P.)

Project Location	TVP & TSP Flour Plant Mandideep	Construction Year & Period	2009-10
		Contractor	Eco Build Indore
		Construction Cost	1287 Lacs



PRAKASH SNACKS Pvt. Ltd.
At Indore (M.P.)

Project	Chips Plant, Utility & Site Development	Construction Year & Period	2011
Location	Indore (M.P.)	Contractor	Manoj Joshi
		Construction Cost	300 Lacs

SDU BEVERAGES Pvt. Ltd.
At Hyderabad

Project	Juice Factory	Construction Year & Period	Under Progress
Location	Hyderabad	Contractor	Sri Navratna Construction, Hyderabad
		Construction Cost	700 Lacs

GREENFIZZ BEVERAGES Pvt. Ltd.
At Kolkata

Project		Construction Year & Period	Under Progress
Location	Hoobly, Kolkata	Contractor	
		Construction Cost	



JAI CORP Ltd.
At SEZ, Pithampur (M.P.)

Project	Manufacturing & Synthetic Ropes	Construction Year & Period	2009
Location	SEZ Pithampur(M.P.)	Contractor	M & A Buildcon Pvt. Ltd.
		Construction Cost	550 Lacs



CREATIVE PROPACK Ltd.
At SEZ, Pithampur (M.P.)

Project	Packaging Unit (Main Plant Utility & Site Development)	Construction Year & Period	2009
Location	SEZ, Pithampur (M.P.)	Contractor	M & A Buildcon Pvt. Ltd.
		Construction Cost	200 Lacs



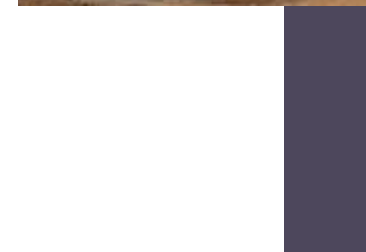
INDIANETS
At SEZ, Pithampur (M.P.)

Project	Manufacturing of Synthetic Ropes, Kneeting & Twine Adm. Block, Ancillary Strut. & Site Development Works.	Construction Year & Period	June'06 to Nov'06 (Singhal Concrete)
		Contractor	Sep'06 to Jan'07 (M & R Const.)
Location	SEZ, Pithampur		Feb'07 to June'07 (Eco Build)
		Construction Cost	260+229+236 Lacs



COMMERCIAL SYN BAGS Ltd.
At Pithampur (M.P.)

Project	Factory Building	Construction Year & Period	2012-13
		Contractor	Abhinav Infrabuild Pvt. Ltd.
Location	Pithampur		
		Construction Cost	355 Lacs



I.F.F. Pvt. Ltd.
At Manglia, Indore

Project	FACTORY BUILDING	Construction Year & Period	2011
		Contractor	UPCL, Indore
Location	Village - Manglia Tehsil - Sanwer Distt. - Indore (M.P.)		
		Construction Cost	355 Lacs



PACKAGING INDUSTRY



MUPNAR FILMS Ltd.
At Pithampur (M.P.)

Project	BOPP Films Manufacturing Unit	Construction Year & Period	-
		Contractor	Gannun Dunkerely Mumbai
Location	Pithampur (M.P.)	Construction Cost	160 Lacs



GILTPACK Ltd.
At Pithampur (M.P.)

Project	Tarpolin and Jumbobag Unit	Construction Year & Period	1995-96
		Contractor	Ankur Const. Indore
Location	Pithampur (M.P.)	Construction Cost	240.00 Lacs



FLEXITUFF INTERNATIONAL Ltd.
At SEZ, Pithampur (M.P.)

Project	Construction of Jumbo Bag Plant	Construction Year & Period	2002-03 (15 Months)
		Contractor	Eco Build Indore
Location	Pithampur (M.P.)	Construction Cost	750 Lacs



FLEXITUFF INTERNATIONAL Ltd.
At Kashipur (Uttarakhand)

Project	Construction of Jumbo Bag Plant	Construction Year & Period	2008-10
		Contractor	Shri Balaji Builders Bhiwadi
Location	Kashipur (Uttarakhand)	Construction Cost	3320 Lacs



PRIME INDUSTRIES
At Haridwar

Project	Construction of Packing Plant, Adm. Office, Ancillary Structure & Site Development Works.	Construction Year & Period	Apr'06 to Jan'07 (10 Months)
		Contractor	VKJ Builders Dehradun
Location	Haridwar (Uttaranchal)	Construction Cost	300 Lacs

PACKAGING INDUSTRY



KHAI TAN CHEMICALS & FERTILIZERS Ltd.
At Kanpur (U.P.)

Project	T.G. Building	Construction Year & Period	2007
Location	Kanpur (U.P.)	Construction Cost	60.00 Lacs

KHAI TAN CHEMICALS & FERTILIZERS Ltd.
At Nimbaheda (Raj.)

Project	Construction of Single Super Phosphate Plant Adm. Block, Ancillary Strucrure & Site Development Works.	Construction Year & Period	Apr'05 to Jan'06 (9 Month)
Location	Nimbahera (Raj.)	Contractor	Creator Engg. Indore
		Construction Cost	434 Lacs



SHRINI WAS FERTILIZERS Ltd.
At Jhansi (U.P.)

Project	Expansion of Super Phosphate Plant	Construction Year & Period	2003
Location	Jhansi (U.P.)	Contractor	Creator Engg. Indore
		Construction Cost	60.00 Lacs

KHAI TAN CHEMICALS & FERTILIZERS Ltd.
At Nimrani

Project	Expansion of Super Phosphate Plant	Construction Year & Period	1996-2005
Location	Nimrani	Contractor	Era Const. & Creator Engg.
		Construction Cost	450 Lacs



KHAI TAN CHEMICALS & FERTILIZERS Ltd.
At Dahej (Gujarat)

Project	Factory Building	Construction Year & Period	Under Progress
Location	GIDC, Dahej (Gujarat)	Contractor	Toyota Construction Pvt. Ltd.
		Construction Cost	1600 Lacs

FERTILIZER & CHEMICAL PLANTS



Somani Ceramics Limited
At New Delhi

Project Expansion work

Location Kessar, Bahadurgarh

Construction 2012-13
Year & Period
Contractor —

Construction
Cost 300 Lacs

CONSTRUCTION MATERIAL



Brilliant Technology & Construction Pvt. Ltd.

At Indore

Project Commercial Complex at Plot No. 8

Location Indore

Construction Year & Period 2010-11

Construction Cost 1200 Lacs



Brilliant Technology & Construction Pvt. Ltd.

At Indore

Project Convention Hall at Plot No. 5

Location Indore

Construction Year & Period 2011-12

Construction Cost 9000 Lacs



Brilliant Technology & Construction Pvt. Ltd.

At Indore

Project Commercial Complex at Plot No. 9

Location Indore

Construction Year & Period 2012-13

Construction Cost 4000 Lacs



BCM PARADISE

At Indore

Project Highrise Building G+14
(4 Blocks)

Location Kh. No. 45/1, 45/2, 45/3
Nipania, Indore

Construction Year & Period 2011-13

Construction Cost 4500 Lacs



COMMERCIAL AND RESIDENTIAL



Siddhi Green

At Mhow

Project Residential Group Housing Project
(G+6) 6 Blocks

Location Mhow (M.P.)

Construction Year & Period 2012-13

Construction Cost 740 Lacs



Shubh City

At Indore

Project Residential Group Housing Project
(G+6) 9 Blocks

Location Gram Palda, Indore

Construction Year & Period 2012-13

Construction Cost 3600 Lacs



Coral Reef

At Indore

Project Township Project (G+6)
5 Blocks

Location Village Pigdambar, Indore

Construction Year & Period 2012-13

Construction Cost 2550 Lacs



Kanadia Apartment

At Indore

Project Multistory Building (G+6) 2 Blocks

Location Kanadia Road, Indore

Construction Year & Period 2012-13

Construction Cost -



9.0 M.L.D. AT CHANDRAPURA (PITHAMPUR) W.S.
SCHEME FOR MPAKVN, INDORE

8.0 M.L.D. AT PILUKHEDI (BHOPAL), PHED BHOPAL

4.00 M.L.D. AT SHUJALPUR EE - P.H.E.D, SHAJAPUR

2.7 M.L.D. AT DHAR, PHED DHAR

9.0 M.L.D. AT BILAOLI, S.E.INDORE PROJECT
CIRCLE, PHED, INDORE.

4.5 M.L.D. AT BORAI, DIST : DURG FOR MPAKVN (P)
LTD., RAIPUR (M.P.)

1.5 M.L.D. AT PILUKHEDI, FOR PHED, BHOPAL
CIRCLE.

10.0 M.L.D. AT IDGAH HILLS, WATER WORKS
DEPARTMENT BHOPAL MUNICIPAL CORPORATION.

3.0 M.L.D. FOR MU. COUNCIL ASHTA, DIST. :
SEHORE

2.0 M.L.D. AT BHIKANGAON, PHED,
KHARGONE.

0.75 M.L.D. AT N.J.A., BHOPAL, CAPITAL PROJECT
DIVISION 2

5.8 M.L.D. AT SENDHWA, PHED, KHARGONE

4.5 M.L.D. AT MALANPUR, DIST : BHIND FOR MPAKVN (P)
LTD., GWALIOR.

2.5 M.L.D. AT KHANDWA, FOR COMMISIONER
CORPORATION, KHANDWA

10 M.L.D. W.T.P. AT IDGAH HILLS FOR PHED, BHOPAL

3.0 M.L.D. W.T.P. AT ASHTA, PHED BHOPAL

0.75 M.L.D. W.T.P. AT NJA, BHOPAL, PHED BHOPAL

W.T.P. AT MEGHNAGAR, PHED JHABUA

W.T.P. AT DOGAWA, KUKSHI, PHED JHABUA

27.24 W.T.P. AT UJJAIN, PHED UJJAIN

3.12 M.L.D. W.T.P. AT KASRAWAD, PHED KHANDWA

3.0 M.L.D. W.T.P. AT DHAMNOD, PHED KHANDWA

10 M.L.D. W.T.P. AT BARWANI, PHED KHARGONE

1.84 MLD WTP AT KHILCHIPUR, PHED, BIORA

7.55 MLD WTP AT SIRONJ, BHOPAL, PHED BHOPAL



4600 KL 18 M STAGING O.H. TANK AT GWALIOR FOR KARIWALA BROTHERS, DELHI

600 KL CAPACITY RCC O.H. TANK AT 40 M STAGING FOR JSL LTD., DURI, ORISSA, CONTRACTOR KARIWALA BROTHERS, DELHI

1050 KL O.H. TANK AT 42 M STAGING AT BELLARY KARNATAKA, CONTRACTOR BALAJI CONSTRUCTION, DELHI

1200 KL SPHERICAL O.H. TANK AT 26 M STAGING FOR PARSHVANATH BUILDERS AT ROHTAK, HARYANA

2250 KL O.H. WATER TANK AT 18 M STAGING AT JABALPUR FOR O.P. GUPTA CONTRACTOR, AGRA

1500 KL O.H. WATER TANK AT KATANGA, DISTT. JABALPUR FOR PHED JABALPUR.

900 KL 18 M STAGING O.H. WATER TANK AT SARAPIPAP, JABALPUR

2000 KL 18 M STAGING O.H. WATER TANK AT GWALIOR, CONTRACTOR BRIJ ENGINEERING, KANPUR

2500 KL 15 M STAGING O.H. WATER TANK AT SAGAR FOR PHED SAGAR

2000 KL 18 M STAGING O.H. TANK AT GWALIOR (PROOF CONSULTANT TATA CONSULTANCY ENGINEERS)

1000 KL 18 M STAGING O.H. TANK AT SINGHPUR ROAD, GWALIOR (PROOF CONSULTANT TATA CONSULTANCY ENGINEERS)

2500 KL O.H. WATER TANK FOR PHED SAGAR

1000 KL O.H. WATER TANK FOR PHED KANNOD

1350 KL O.H. WATER TANK AT JANTA COLONY, JAIPUR

850 KL O.H. WATER TANK FOR NHDC, NARMADA NAGAR (M.P.)

450 KL OHWT GAUGHAT, UJJAIN, PHED UJJAIN

450 KL OHWT AT MULLAPURA (UJJAIN), PHED UJJAIN

MAJOR WATER TANKS



<u>NAME OF CLIENT</u>	<u>NAME OF WORK</u>
PRESTIGE FEED MILLS LTD., DEWAS	4 STEEL SILOS - 7000 M.T. EACH
K.S. OILS LTD., GUNA	2 DAY SILOS - 1800 M.T.
K.S. OILS LTD., RATLAM	2 STEEL SILOS - 5000 M.T. & 3000 M.T.
K.S. OILS LTD., KOTA	4 STEEL SILOS - 5000 M.T. (2 NOS.) & 2500 M.T. (2 NOS.) DAY BIN SILO - 400 M.T.
ALPINE SOLVEX LTD., PITHAMPUR	STEEL SILO - 10000 M.T.
ALPINE SOLVEX LTD., PITHAMPUR	DAY SILO - 2000 M.T.
RICO AGROILS, KOTA	2 STEEL SILO - 5000 M.T.
GUJARAT AMBUJA EXPORTS LTD , MANDSAUR	STEEL SILO 300 M.T. & 10000 M.T.
GUJARAT AMBUJA EXPORTS LTD , SITARGANJ	STEEL SILO - 10000 M.T.
SONIC BIOCHEM EXTRACTION LTD., PITHAMPUR	2 STEEL SILO - 10000 M.T. EACH
DEESAN AGRO-TECH LTD., MIDC, DHULE	STEEL SILO - 10000 M.T.
KRITI INDUSTRIES (I) LTD., DEWAS	2 STEEL SILO - 10000 M.T. EACH
INDIAN SOYA INDUSTRIES LTD., INDORE	2 STEEL SILO - 8000 M.T. & 800 M.T.
BHASKAR FOODS PVT. LTD., AMRAWATI	STEEL SILO - 10000 M.T.
SHARDA SOLVENT LTD., BIORA	1 STEEL SILO - 10250 M.T. 1 DAY SILO - 805 M.T.
GUJARAT AMBUJA EXPORTS LTD., PITHAMPUR	RCC SOYA SEED SILO - 10000 M.T.
DEWAS SOYA LTD., DEWAS	2 RCC SILO - 5000 M.T.
KHAITAN AGRO, RATLAM	2 RCC SILO - 5000 M.T.



BUILDING SECTOR SERVICES

MAJOR CLIENTS:

- ♦ DDF Consultants Pvt.Ltd,
- ♦ JSPL,
- ♦ Reliance ADAG,
- ♦ Anant Raj group,
- ♦ S-Tech group,
- ♦ Siddharth Group
- ♦ Khan Global Engineering Consultant Pvt.Ltd.
- ♦ Nestle,
- ♦ NNE Pharmaplan,
- ♦ Earth Infrastructure,
- ♦ Unitech Limited
- ♦ DLF,
- ♦ Uppals
- ♦ Sunworld Arista
- ♦ ASF Insignia SEZ Pvt.Ltd.
- ♦ Lloyd Insulations,
- ♦ IIT
- ♦ Oswal
- ♦ Framework Interiors
- ♦ DTTDCL
- ♦ THDC
- ♦ Ginni International
- ♦ Glair Infrastructure
- ♦ Min.of Inf. Comm.& tech,
Swaziland
- ♦ Sunplast Industries,
- ♦ Urbtech's developers,
- ♦ Aims group,
- ♦ Splendor group,
- ♦ Imperia group,
- ♦ Archi Group,
- ♦ INDCON
- ♦ Nahar group,
- ♦ Octamec Engg,
- ♦ Multicolour Steel
- ♦ ADG SUMAVI Technical
Services Pvt Ltd
- ♦ Sare Group

Apart from above clients we are also working for other clients for their high rise group housings, IT parks and commercial buildings ranging from 5 to 35 story buildings and Industrial plants. We are also working as consultants for Jaiprakash Associates Ltd. for Wind Engineering related review of their proposed tall buildings more than 25 floors in height.

We are currently working as Principal Consultants for India's first commercial Wind Tunnel establishment project, for high rise buildings, in commercial sector, for JAL.

ESCOM is the First Institutional Member of Indian Society for Wind Engineering (ISWE).(Certificate reproduced below)



ESCOM has received Certificate of achievement from Bentley



Er.(Dr.) ABHAY GUPTA BE(Civil), ME(Struct), Ph.D., FIE(I) C H A R T E R E D E N G I N E E R

Director, Skeleton Consultants Pvt. Ltd. NOIDA

Dr. Abhay Gupta has obtained his BE(Civil) in 1981 & subsequently ME(Structures) from SGSITS Indore; and Ph.D. from University of Roorkee, Roorkee (now IIT Roorkee) in the area of "Aerodynamic Interference in Tall Rectangular Buildings: Wind Tunnel Studies" in 1996. He has more than 30 years of experience in the field of Civil Engineering construction and Structural design.

Dr. Abhay Gupta is one of the Directors of Skeleton Consultants Pvt. Ltd. having offices at Delhi-NCR & Indore, wherein consultancy is provided for Integrated Project Delivery, right from Concept to commissioning in Industrial Sector. He is also founder Director of ESCOM Consultants P. Ltd. at Noida, a leading Civil, Structural and Infra-structural engineering consulting firm in Delhi-NCR, established since Jan. 2011. Skeleton & ESCOM provides consultancy in the field of mid-rise and high-rise RC buildings for residential, commercial, retail, education, sports, hospital and other sectors, Industrial steel buildings, PEB structures, Wind Engineering of structures, Retrofitting & Rehabilitation, and such other special areas.

He is also the Principal consultant for establishment of India's first International State-of-the-art **Wind Engineering Application Center** (Wind Tunnel) in private sector for Tall Buildings and structures, for Jaiprakash Associates Ltd. at JUET Guna in MP where one of the country's biggest Wind Tunnel facility for buildings/structures is being established.

In past he has worked with the multinational integrated engineering consultancy organization M/s EiGEN Technical Services P. Ltd. at Gurgaon as Vice President & Business Unit Head—Structural Design & Detailing from April-09 to Dec.-10 where he was responsible for integrated project deliveries on Indian and International projects for developers and consultants through implementation of technology in the service areas of RC & Steel buildings design from "RIBA stages C-to-F", Rebar detailing, Post tensioned design/detailing, 3D BIM models and Steel detailing as per Indian and British codes.

Prior to this he was Vice President—Engineering at Era Building Systems Ltd. from April-07 to March-09. He is well experienced in the field of Design & Production of Pre Engineered Steel Building and has executed more than 200 PEB projects in various sectors like Warehousing, Heavy Engineering Industrial sheds with cranes upto 150MT capacity, Hangars, Tall Industrial Structures and large domical roofs. He has made several authoritative presentations on PEB & Steel structures on several platforms across the country.

In the beginning of his career he has served as a teaching faculty at SGSITS Indore starting from 1984 and took VRS in 2007 when he was Professor of Structural Engineering. His areas of interests include Design of Structures in RCC and Steel, Design for Dynamic Effects, Codes of Practices in Wind and Earthquake Engineering, Bridge Engineering; and Soil-Structure Interaction. **He has also completed One Semester certificate course on "Earthquake Resistant Design of Buildings and Structures" from IIT Kanpur in 2003 under NPEEE.** He has also worked with the IIT Roorkee team under Prof. Prem Krishna for preparation of revised draft of IS 875: pt3, & its Handbook which is available on website of NICEE. Dr. Abhay Gupta was also awarded the Two-month summer research fellowship by INAE at IIT Roorkee in 2006 in the area of Interference in Tall Buildings & made an invited presentation during the 3rd International Workshop on Harmonization of Wind loading codes in Asia-Pacific region in Delhi in 2006. He was one of the invited experts for Wind Tunnel Testing & investigation for 130m, 160m & 205m tall buildings proposed/constructed at Kolkata, Noida and Mumbai respectively, done at IIT Roorkee. During this period he has worked on several positions of administrative responsibilities as given in detailed CV.

Dr. Gupta is a Fellow of Institution of Engineers (India), Indian Association of Structural Engineers and a Life Member of Indian Geotechnical Society, Indian Society of Wind Engineering, Indian Roads Congress, Indian Society of Earthquake Technology and associated with several other professional bodies. He was also the Vice President of ISWE, & National Executive committee member of IGS and currently GC Member in IAstructE & a referee for IRC journals for Bridge Engg Division. Dr. Gupta was a member of BIS subcommittee CED43 (for Foundations of Buildings) and currently representing in CED57 (Cyclone Resistant Housing) & CED46 (Steel Structures). Dr. Abhay Gupta has also served as one of the Editors for International Journal of Wind & Engineering.

He has guided more than a dozen of ME thesis in the areas of Wind & Earthquake engg, Structural Engg. and Concrete Technology. He has also organized and attended several National and International conferences. **Dr. Abhay Gupta has travelled to UK, Dubai, Finland, The Netherlands, Singapore, Italy, Australia & Swaziland (SA) for professional assignments.**

Er. Vandana Verma: Deputy General Manager

ME 1991 from SGS Instt. of Tech. & Sc. Indore
BE(Civil) 1988 from SGS Instt. of Tech. & Sc. Indore

Professional Career

- 2 Yrs GM in ICT-SD Engineering Consultants Pvt.Ltd., New Delhi
- 2 Yrs Dy.Manager Design & Drafting in Era Metal Building System Limited, Noida
- 1 Yr Structural Design Engineer in M/s Meinhardt Singapore Pte Ltd., NOIDA
- 3 Yrs Structural Design Engineer in M/s Charu Engineering Consultant, New Delhi
- 2 Yrs Sr. Civil Engineer in M/s Kanwal Builders Pvt.Ltd., New Delhi
- 8 Yrs Civil Engineer in M/s ATV Projects India Limited, Mathura (U.P.)

Major Design Projects:

- IT PARK Structural design of Advant IT park tower B with flat slab construction , Greater Noida
- GROUP HOUSING of Siddhartha one Housing at Gurgaon comprising basement for car parking,
- COMMERCIAL Structural Design of Shopping mall DLF building at Gurgaon
- GROUP HOUSING - Structural Design of Stech Imperia at Greater Noida
- INDUSTRIAL – Structural design of transformer manufacturing plant for PRIME ELECTRICAL LTD., NAYUDUPETA at NELLORE comprising main production plant, Guest House, Canteen , Temple, workers housing etc.
- PRE ENGINEERED STEEL BUILDING –Design of sheds such as Heavy Lifting shed, Inspection shed for Mumbai Rail Vikas Corporation , Mumbai,
- PRE ENGINEERED STEEL BUILDING –Design of various sheds for eastern central railway such as Carriage stores, Wheel & Bogie park for GPT, Harnaut.
- PRE ENGINEERED STEEL BUILDING –Design of sheds for Jindal Saw Ltd. At Nanakapaya
- PRE ENGINEERED BUILDING –Design of sheds for Arani Power with crane capacity 75 T at Hyderabad
- PRE ENGINEERED BUILDING –Design of sheds IMP Power with crane capacity 75 T at Silwasa
- TOWNSHIP – Project Management of township in 30 acre land having various quarters such as Bachelor accommodation, Staff housing , Manager housing ,General Manager Housing ,Vice President residence, Over head water tank, Temple, roads, Sub- station ,ATV labour colony etc. for ATV Projects India Ltd. At Mathura.
- WATER RETAINING STRUCTURE - Effluent Treatment plant circular tanks as well as rectangular tanks of various capacities.
- M/s Jindal Saw Limited, Mundra, in Gujarat: Pre engineered building of size 70 M x 165 M shed with crane capacities 15 T along with Shed 30 M x 70 M with 40 T capacity cranes.
- M/s Jindal Saw Limited, Bellary in Karnataka: A Pre engineered Building of size 60 M x 150 M shed with crane capacity 15 T
- M/s Jindal Saw Limited, Nanakapaya: A Pre engineered building of size 65Mx120M shed with crane capacity 15 T and 40 T
- M/s Arani Power Limited, Hyderabad: Pre engineered building of size 40Mx80M with 80T crane capacity
- M/s Mumbai Rail Vikas Corporation, Mumbai inspection shed of size 30Mx280M with crane capacity 15T heavy lifting shed of size 30Mx160M with crane capacity of 30 / 15 T, pit wheel lathe shed of size 12.5mx30m with crane capacity 5 T
- M/s GPT, Harnaut several buildings such as bogie repair, carriage Stores, wheel & bogie park, heavy repair shed, light repair shed, Plant care, incinerator, outgoing coach etc.
- Transformer plant for M/s Prime Electric limited at Nayudupeta, SEZ, and Nellore development of 100 acre land.
- M/s ATV PROJECTS (I) LTD, execution of town ship in 30 acre of land with Staff quarter, bachelor accommodation, manager, general manager, vice president accommodation, Over head tank, road etc.

BUILDING SECTOR PROJECTS DETAILS

	COMMERCIAL BUILDINGS
1	PARADISE AVENUE MULTISTORY BUILDING AT JAMMU FOR MGI INFRA PVT. LTD.
2	DUBAI OUTLET MALL-II FOR M/S DDF CONSULTANTS,
3	PROPOSED TERI BIO NANO LAB AT TERI GRAM FOR STUDIO FOR HABITAT FUTURE
4	ABC LUDHIANA FOR ARCHIGROUP ARCHITECTS
5	ANANT RAJ 93-94 SEC-136 NOIDA FOR KGD) (PROJECT AWARDED TO ESCOM AND SHIFTED TO SKELETON NOW)
6	RADISSON BLU HOTEL, SECTOR-20B, FARIDABAD FOR M/S A.SHARMA ASSOCIATE (PROJECT AWARDED TO ESCOM AND SHIFTED TO SKELETON NOW)
7	AGENCIE GODOWN PLOT NO. C-10/7,C-10/8 SITUATED IN SAROJINI NAGAR LUCKNOW FOR M/S PUNJAB KESARI
8	SPS APOLLO HOSPITAL- LUDHIANA FOR M/S ADG SUMAVI
9	DLF LUDHIANA FOR DLF
10	ANANTRAJ GROUP-COMM TOWER AT SEC-44, GURGAON
11	COMM BLDG AT PLOT 111-112 SEC-136, NOIDA FOR ANANTRAJ GROUP
12	PARKING LOT FOR INDOGULF HOSPITAL NOIDA
13	PLOT NO. N-11, N.D.S.E, PART-I, NEW DELHI FOR M/S UPPALS
14	MONNET GROUP CANTEEN BLOCK, AT NAHARPALI RAIGARH FOR M/S DFA ARCHITECTS
15	COMMERCIAL BUILDING AT PLOT NO.- 59 , SEC- 136, NOIDA FOR M/S GGG REALITY PVT. LTD
16	SAPPHIRE COURT AT SEC-KP-V, GREATER NOIDA FOR M/S EARTH INFRASTRUCTURE
17	GHI SOHO TOWER AT SECTOR 67, GURGAON FOR M/S DFA ARCHITECT
18	DATA CENTRE FOR ADAG RELIANCE , NAVI MUMBAI
19	GREENFIELD COMPACT HYPER MARKET AT HYDERABAD A.P – BHARTI WALMART LIMITED
20	COMMERTIAL TOWER AT 32-33, SECTOR 142, NOIDA FOR M/S DFA ARCHITECTS
21	BUSINESS CITY AT LUDHIANA FOR M/S ARCHI GROUP
	GROUP HOUSING
1	PROPOSED AGH 63A, GURGAON FOR BADERWALS INFRA PROJECTS PVT. LIMITED
2	PROPOSED AGH 103, GURGAON FOR BADERWALS INFRA PROJECTS PVT. LIMITED
3	PROPOSED COMMERCIAL MALL AT MAHENDERGARH FOR BADERWALS INFRA PROJECTS PVT. LIMITED
4	VILLA DEVELOPMENT ON PLOT AT SECTOR-11, SOHNA HARYANA FOR THDC (SOHNA CITY LLP) (PROJECT AWARDED TO ESCOM AND SHIFTED TO SKELETON NOW)
5	RESIDENTIAL TOWERS FOR JINDAL STEEL & POWER, ANGUL (ORISSA) (STEEL FRAME BUILDING)
6	GROUP HOUSING AT GREATER NOIDA FOR SPACE DESIGN GROUP
7	WORKER'S HOUSING FOR RHYTHM TEXTILES & APPARELS PARK NEAR LUDHIANA
8	NCR GREEN FOR SIDDHARTHA GROUP
9	S-TECH IMPERIA HOUSING, SEC-KP-V,G.NOIDA
10	PARSADA G-TYPE G+3 LGFS HOUSES OF JSPL RAIGARH
11	GROUP HOUSING AT NEEMRANA, ALWAR, RAJASTHAN FOR ANANTRAJ GROUP - ARCHITECT M/S DFA ARCHITECT
12	SEC-63A -400 YDS & 500 YDS VILLAS FOR DFA (ANANTRAJ GROUP)
13	PROPOSED MASTER PLAN DEVELOPMENT FOR SARE GROUP AT KOLATHUR, CHENNAI.
14	PROPOSED MASTER PLAN DEVELOPMENT (TWIN & QUAD VILLAS) FOR SARE GROUP AT KOLATHUR, CHENNAI

15	PROPOSED MASTER PLAN DEVELOPMENT (TWIN & QUAD VILLAS) FOR SARE GROUP AT THIRUPORUR
16	SIDHARTHA BUILDHOME – NCR GREEN HOUSING AT SEC-95, GURGAON - ARCHITECT M/S DFA ARCHITECT
17	OPULENT INFRA DEVELOPERS – XAVIERS HOUSING, SEC-168, NOIDA - ARCHITECT M/S DFA ARCHITECT
18	AIMS GOLF TOWN, SECTOR 4, G. NOIDA FOR DFA (AIMS GOLF TOWN DEVELOPERS PVT. LTD.)
	INDUSTRIAL /PEB
1	NEW BSL-3 ANIMAL VACCINE PLANT AT JAKARTA, INDONESIA FOR M/S PT SHS INTERNATIONAL, CLIENT : M/S NNE PHARMAPLAN INDIA LTD.
2	GREENFIELD FOODS FACILITY AT BHUBANESWAR FOR M/S ANMOL BISCUITS , CLIENT : M/S NNE PHARMAPLAN INDIA LTD.
3	SYNGENE, BANGALORE FOR M/S NNE PHARMAPLAN INDIA LTD.
4	STELIS BIOPHARMA PROJECT STAR AT MALAYSIA FOR M/S NNE PHARMAPLAN INDIA LTD.
5	D-235, EPIP, UPSIDC, KASNA PROJECT VIPL NOIDA FOR VOGELSANG INDIA PVT. LTD.
6	PROPOSED INDUSTRIAL UNIT AT KESHWANA RAJASTHAN FOR IMAGINE FIBRE
7	SUNRISE INTERNATIONAL LABS LIMITED AT CHERLAPALLY, HYDERABAD FOR NNE PHARMAPLAN INDIA LTD.
8	SILO FOUNDATION DESIGN WORK AT RUDRAPUR PLANT FOR M/S ROQUETTE RIDHI SIDDHI PVT.LTD.
9	HBL INTEGRATED VACCINE COMPLEX AT CHENGALPATTU, CHENNAI FOR NNE PHARMAPLAN INDIA
10	PASTEUR INSTITUTE OF INDIA COONOR FOR NNE PHARMAPLAN INDIA
11	DENIM – BOILER, DENIM-COMPRESSOR ROOM, SPG LT PANEL ROOM, OSWAL SPINNING PLANT FOR DFA (OSWAL)
12	TRINITY BANGLORE FOR MULTICOLOR STEELS
13	PRELIMINARY DESIGN AND WEIGHT ESTIMATION OF PEB BUILDINGS FOR TPCA, NIAGARA INFRA, GLAIR INFRA ETC
14	NAHAR INDUSTRIES BOILER LALRU
15	HEAVY FABRICATION SHOP AT ISGEC YAMUNA NAGAR FOR GLAIR INFRASTRUCTURE
16	CASH & CARRY STORE IN ALLAHABAD FOR BHARTI WALL MART
17	NESTLE R&D CENTER MANESAR FOR NNE PHARMA
18	RAIN PROTECTION SHED BORL FOR OCTAMEC ENGINEERING
19	INDCON PROJECTS & EQUIPMENT LTD. - INDUSTRIAL SHED AT DAHEJ, DISTT. BHARUCH (GUJARAT)
20	CENTRAL LAUNDRY PARK FOR QDS
21	PROPOSED COLD STORE & EXTRACTION PLANT FOR M/S AROMATRIX FLORA PVT.LTD
22	NPI-BCGVL CHENNAI FOR NNE PHARMAPLAN INDIA
	SPECIAL
1	SHIVA MURTI AT NATHDWARA, RAJASTHAN FOR M/S TATPADAM UPWAN
2	VISHNU MANDIR ONTARIO CANADA
3	STATUE (151'HT) OF LORD HANUMANJI AT SOLAN, H.P. FOR M/S TEMPLESMAC
	PROJECTS FOR IIT
1	PRE ENGINEERED BUILDING AT AGARTALA FOR M/S. DWARIKA PROJECTS LIMITED-COMPLETED
2	PEB FOR M/S MES BANGALORE- COMPLETED
3	BSES HOUSING AT JANAKPURI- COMPLETED
4	KENDRIYA VIDHYALA, ANDREWSGANJ- COMPLETED

5	BUILDING OF TRIBAL HOSTAL GOVT. OF CHHATTIGARH AT DWARKA. NEW DELHI- COMPLETED
6	HOARDING DETAIL FOR IIT (UNIPOL DESIGN)- COMPLETED
7	HANGAR FOR ARMY AT PATHANKOT - DESIGN CHECKING- COMPLETED
8	STRUCTURAL SAFETY AUDIT OF EXISTING OLD BHAWAN AT SEC-73, NOIDA- COMPLETED
9	STRUCTURAL DESIGN CHECKING FOR SUB-REGISTRAR OFFICE, KAPASHERA, GEETA COLONY, BASAIDASPUR-COMPLETED
10	STRUCTURAL DESIGN CHECKING FOR SUB-REGISTRAR OFFICE ALIPUR & NANGLOI- COMPLETED
11	STRUCTURAL DESIGN CHECKING FOR SUB-REGISTRAR OFFICE LIBASPUR AND MANJHRI – CLIENT : DTTCL-COMPLETED
12	STRUCTURAL DESIGN CHECKING FOR SUB-REGISTRAR OFFICE AT BHALSWA - RUNNING
13	STRUCTURAL DESIGN CHECKING FOR SUNWORLD ARISTA HOUSING PROJECT AT SECTOR-168 NOIDA (TOWER 2,3,4)- COMPLETED
14	STRUCTURAL DESIGN/PROOF CHECKING OF ETP&STP FOR SIMA LAB - COMPLETED
15	STRUCTURAL AUDITING WORK OF NEW BUILDING OF M/S ADOBE AT SECT. 132, NOIDA - COMPLETED
	PROJECTS FOR GOVT.
1	PEB HANGAR (60.00X60.00) FOR MES (NAVY) AT ARAKONAM, VIZAG. - COMPLETED
2	PRE ENGINEERED BUILDING OF HANGAR AT RAMNAD, FOR MES (NAVY) VIZAG- COMPLETED

PAST EXPERIENCE IN HEAVY INDUSTRIAL PEB PROJECTS

LIST OF STEEL STRUCTURE PROJECTS

S No.	Client	Location	Approx. Area (sqm)	Special feature
1	BHEL-Fabrication Shop	Ranipet	2000	100/20 MT EOT
2	Weg Industries P Ltd.	Hosur	20800	80/60/40/20/10 MT EOT, 2 MT Jib Crane
3	Arani Power	Hyderabad	7500	80MT cranes and multi gable structure
4	IMP Power	Silvassa	5600	75/20MT cranes in a multigable structure
5	L & T - MHI Boilers Shop A & B	Hazira	9000	60/40/20 MT EOT, 2 MT WMC
6	L & T - Gasifier Shops	Hazira	10600	50 MT EOT
7	Telco Construction Equipment	Kharagpur	11100	40 MT EOT, 10 MT SGEOT
8	BHEL-MP Shop	Ranipet	1850	40 MT EOT, 3 MT SGEOT
9	L & T - Assembly & Integration Shop	Talegaon	3850	25 MT EOT, 2 MT WMC
10	L & T - MHI Boilers Shop C,D,E & F	Hazira	36000	5/10/20 MT EOT, 5/15 MT SGEOT
11	Era Buildsys Ltd.	Nagpur	46200	10/15 MT EOT
12	L & T - Accommodation Shop	Hazira	2000	15 MT EOT
13	BMRC-Peenya Depot	Bangalore	32650	3.5/5/15 MT
14	MRVC - Lifting & Inspection Shed	Mumbai	14500	Curved rafter 3 workshops with cranes 15 MT EOT
15	L & T - Electric Shop	Hazira	2000	10 MT EOT
16	Surya Roshni Pvt. Ltd	Bhuj	13000	3/5/10 MT EOT
17	L & T - Warehouse	Hazira	2000	10 MT EOT
18	Thermax Ltd	Baroda	1750	7.5 MT EOT
19	Hindustan Aeronautics Ltd	Bangalore	4000	5 MT EOT
20	Jindal Saw Limited	Mundra	36000	Large industrial units with 22.5m span jack beams and crane beams - 5nos. 30T
21	Jindal Saw Limited	Nanakpaya	15000	5-30 MT EOT, Sheds
22	Jindal Saw Limited	Bellary	31500	5-30 MT EOT, cranes , jack beams.
23	Nectar Life Sciences	Chandigarh	7000	47m high, 11 floor industrial structure. 1st time in PEB.
24	Mumbai Rail Vikas Corporation	Mumbai		Heavy Lifting shed, Inspection shed
25	BAJAJ ECOTECH		46468	large sugar mill complex at three locations
26	GPT INFRA/ Harnaut	Harnaut	37175	Complex of 17 buildings. RITES & IIT approved design. Crane Capacities 5/10/15/20/50 MT EOT

27	Coign Consultants Mumbai and SSSL Mumbai	Mumbai	27881	5 warehouse buildings, 40m clear spans
28	Thermax Ltd	Baroda	25093	2Nos 75MT cranes at 20m height and two gables 27m span each
29	Soma Enterprises - 4 projects		23234	Warehouses
30	Videocon		22305	Turnkey project with Civil work
31	PRIME MANAGEMENT		15799	Large warehouse completed in 100 days.
32	ALPS INDUSTRIES LIMITED	Meerut	14870	Process plant with Mezanine floors and heavy pipe racks
33	JKS INFRASTRUCTURES at Panvel	Panvel	13941	large warehouse complex, 3 buildings.
34	HAL/ Bangalore	Bangalore	1.4	3 hangars in HAL Bangalore complex.
35	Gurgaon		12	Residential High rise towers, B + G + 17
36	ARCHI GROUP & API Ltd. Delhi	Delhi	8	Regular industrial building
37	SIDDHARTHA GROUP		less than 1.0lac sft	Industrial Steel building with PEB concept. Foundations and Office block in RCC.
38	VPPT Delhi	Aarakonam	less than 1.0lac sft	60m Large span and 22m height Hangars for aircrafts, with large doors at gable ends.
39	VPPT Delhi	Ramnad	less than 1.0lac sft	42m Large span and 10m height Hangars for aircrafts, with large doors at gable ends.
40	CAPARO ENGG Ltd		less than 1.0lac sft	Industrial building with cranes
41	SOUTH ASIA BREWERIES	Aurangabad	less than 1.0lac sft	Beautiful curved rafter breweries process plant with pipe racks. A turnkey project.
42	FEDERAL ENGINEERING		less than 1.0lac sft	65/25MT cranes at 16m height
43	ACC LIMITED	Chanda	less than 1.0lac sft	80m dia large domical structure with 24m height for coal storage
44	L&T/ TALEGAON	Talegaon	less than 1.0lac sft	15m high with 2-25 tons EOT cranes & 2-Wall Mounted Cranes
45	SHETKARI BALIRAJA SUGAR LTD		less than 1.0lac sft	Sugar Mills
46	Unichem	Sikkim	less than 1.0lac sft	Pharma plant at a very difficult site
47	MAGAL ENGG LTD		less than 1.0lac sft	Aesthatically beautiful curved shape building
48	BRAHMAKUMARI		less than 1.0lac sft	40-50m clear spam curved rafter auditorium roof
49	THYSSEN KRUPP	Hyderabad	less than 1.0lac sft	Regular industrial building
50	BSBK	Greater Noida	less than 1.0lac sft	Regular industrial building

Proof Checking Project details

Sl.No.	Name of Project	Client	Remark	Type of Project	Type of Structure	Size/Height/Detail of Project	Area in Sqft	Status
1	ASF Grand Canyon B3	ASF Insignia SEZ Private Limited		IT park	RCC	2B+G+17 stories	15,00,000	Completed
2	ASF-Housing & Club	ASF Insignia SEZ Private Limited		HR-GH	RCC	3 Tower (G+18) + Club Huse (G+4) + Basement 3	530000	Completed
3	IT Block in the processing zone of ASF Insignia Building B1	ASF Insignia SEZ Private Limited		IT park	RCC		20,00,000	in progress
4	Uniworld spa2 south Gurgaon	Unitech Limited		HR-GH	RCC	6 Towers(2B+G+28)+ Club+ EWS+Squash Court+Retail	14,70,000	in progress
5	Sunworld Arista-1_Tower 2,3&4	Sunworld	Through IIT Delhi	HR-GH	RCC	2B+G+24, 3 Towers	6,24,700	Completed
6	Sunworld Arista-2_Tower 5,6&10	Sunworld	Through IIT Delhi	HR-GH	RCC	2B+G+31, 3 Towers	9,63,839	Completed
7	Sunworld Arista-3_Tower 7,8&9	Sunworld	Through IIT Delhi	HR-GH	RCC	2B+G+27, 3 Towers	8,21,000.00	in progress
	Golf Community GH3 at Hitech City, Lucknow		IIT		Group Housing	B+G+24 (12 Towers) + Club Bldg	964777	Completed
8	Kendriya Vidyalaya Andrews Ganj	KV, Delhi	Through IIT Delhi	Misc.	RCC	Retaining wall design checking and Site Inspection report about roof slab		Completed
9	Hangar at Arakonam	MES/Vardhman PEB	Through IIT Delhi	Hangar	PEB		15,000	Completed
10	Hangar at Ramnad	MES/Vardhman PEB	Through IIT Delhi	Hangar	PEB		25,000	Completed
11	Hangar at Pathankot	MES/Vardhman PEB	Through IIT Delhi	Hangar	PEB		75,000	Completed
12	PEB Building at Kanpur for Glair Infrastructures Limited	Glair Infrastructure	Through IIT Delhi	Industrial	PEB		16185+95320	Completed
13	SML-MES Bangalore	MES	Through IIT Delhi	Industrial	PEB		5,000	Completed
	SML-Dwarika Projects Agartala		IIT		PEB		15,000	Completed
14	Sub-Registrar Offices in Delhi	DTTDCL	Through IIT Delhi	Offices	PEB+LGFS	G+2, G+1,G	15000+10000+20000+11190	Some Completed & some in progress
15	DTTDCL-7 :SDM :office at Nangloi	DTTDCL	IIT	Commercial	Light gauge steel office	2 story	11836	Completed
16	MES 650 KLD STP at Rangpuri	MES/Amit Goel associates	Through IIT Delhi	Water Retaining Structure	RCC		18,300	in progress

17	Friends Unity Hospital INDORE	Friends Unity Hospital & Research centre Pvt.Ltd.		Commercial	RCC		3,25,000	in progress
18	Residential Villas at Kasauli	Tata Housing Development Corporation		Low rise	RCC	More than 10 type of villas, in two phase		Completed
19	Rageshwari Industrial establishment at Badmer	Cairns Energy		Industrial	RCC			Completed
20	IBIS_Hyderabad	ADG Sumvai		Hotel	RCC			Completed
21	IBIS_Goa	ADG Sumvai		Hotel	RCC		19,18,000	in progress
22	South Park - Unitech	Unitech Limited		HR-GH	RCC	6 Towers+ Club Area + Basement		Completed
23	OHWT at Nandigama	DLF Gayatri Developers		Water Retaining Structure	RCC		4,00,000	Completed
24	DLF Towers Lucknow	DLF Universal Ltd.		HR-GH	RCC	2B+G+14, 3 Towers	574000	in progress
31	F-9 Hauz Khas & B-124 Sarvodaya	SHPL		Housing			330456	Completed
25	INSPIRE at Sec-119, Noida	Eldeco Infrastructure & properties Ltd.		Commercial	RCC	G+24 stories, 4 Towers	1300000	in progress
26	Group Housing at Greater Noida	M/s Unibera Developers Private Limited		HR-GH	RCC	1B+S+21 floors 8 Towers	1105000	Partially Completed
27	Group Housing in Noida Extension sec. 10	M/s Amaatra Group		HR-GH	RCC	1B+S+21 floors 8 Towers		Completed
28	Structural Design Checking of ETP/STP for Continental Tyres, Meerut	M/s Sima Labs, Delhi	Through IIT Delhi	Water Retaining Structure	RCC	1000KLD/300KLD	3,20,000	in progress
29	Office Buidling at Plot No. 13, Sectors - 32, Indtitutional Area, Gurgaon	M/s SHPL		Office Building	RCC	3B+G+9		Completed
30	Kendriya Vidyalaya at Bhakli, Rewari	KV, Delhi	Through IIT Delhi	School	RCC	G+2	5000	In progress
31	Office Complex & type B bldg., at Bajoli Chamba	M/s Interarch PEB	Through IIT Delhi	Office complex	PEB+LGFS	G+2		Completed
32	Eklavya School at Vapi	M/s MGI Infra	Through IIT Delhi	School	PEB+LGFS	G+1	100000	in progress
33	Nursing College Hostel & admin building, Sirkot	M/s Loomcrafts Shades Systems Pvt. Ltd., GZB		Institutional	LGFS	G+3	6000	Completed
34	Extension of medical college, jabalpur	M/s MGI Infra	Through MANIT, Bhopal	Institutional	LGFS	G+2+Additional floor	18000	in progress
35	Commercial Building at Okhla Phase-III	Exhibitions India Pvt. Ltd.		Commercial	RCC	2B+S+G+3		in progress
36	Residential Apartment at Ratnapuri Jaipur	Anil Ratan Chand Kastiya,		HR-GH	RCC	B+S+19		

Legend

HR-GH

High Rise Group Housing

SKELETON TEAM EXPERIENCE IN STRUCTURAL INTEGRITY OF EXISTING BUILDINGS

S No.	Year	Project	Client	Location	Type of Structure	Description & Size of project	Status
1	2011	Retrofitting & Rehabilitation of Export building, Cargo terminal, International Airport (IGI)	M/s. Vipul Modern Buildcon Pvt. Ltd.	New Delhi	RCC	Assessment of present condition of the existing G+1 RCC building to suggest Rehabilitation / strengthening methodology	Completed
2	2011	Strengthening of Par Boiling Plant-2	M/s Sunstar Overseas Pvt. Ltd.	Amritsar	Steel	Analysis of existing structure to suggest strengthening measures with wind/EQ loading.	Completed
3	2011	Structural Audit for damage assessment & repair rehabilitation of BSES housing complex at Janakpuri	M/s BSES Rajdhani Power Ltd. through IIT Delhi	New Delhi	RCC	A residential complex of 900 flats, G+3 buildings, for condition assessment and retrofitting strategy	Completed
4	2011	Visit & Inspection of British Council Library bldg. at KG marg	M. Moser Architects Delhi	Delhi	RCC	Seismic and other structural compliance certification as per prevailing codes/standards	In progress
5	2011	Structural audit of Residential apartment at 68, Harsh Vihar, Pitampura	Mr. Ahuja through IIT Delhi	Delhi	RCC	G+4 apartment building, for strength assessment and retrofitting	Completed
6	2011	Kamal Institute of Higher Education & Advanced technology	IIT Delhi	Delhi	RCC	Strength Assessment & Certification of G+2 building for codal compliance	Completed
7	2011	Structural audit of NSIT sports Stadium	IIT Delhi	Delhi	RCC	Establishment of quality of work for sports stadium	Completed
8	2011	Structural audit of Mr. Randhir Chopra at 1993A green field	Randhir Chopra	Faridabad	RCC	Inspection and condition assessment	Completed
9	2011	Structural audit of Blue Frog Club, Mehrauli	Mr. Achal Jain Blue Frog	Delhi	Steel	Inspection and condition assessment	Completed
10	2011	Retrofitting & Rehabilitation of Import building, Cargo terminal, International Airport (IGI)	M/s. Vipul Modern Buildcon Pvt. Ltd.	New Delhi	RCC	Assessment of present condition of the Burnt area at first floor for existing G+1 RCC building to suggest Rehabilitation / strengthening methodology	Completed
11	2012	Structural Audit for damage assessment & repair rehabilitation of Unitech Harmony Group housing complex at Gurgaon	M/s Unitech Ltd.	Gurgaon	RCC	A residential complex of 114 flats, G+19 buildings, for inspection, condition assessment and retrofitting strategy	Completed
12	2012	Condition assessment of IPDDL Staff Colony at Shalimar Bagh	M/s. TATA Power Delhi Distribution Limited	New Delhi	RCC & Brick Masonary	A residential complex of 548 apartment units, G+3 storey load bearing wall structure with RC slab, for condition assessment.	Completed
13	2012	Structural Audit for damage assessment & repair rehabilitation of OIBD Bhawan at Sector-73 Noida	Oil Industries Development Board	Noida	RCC	G+9 storied building with 2 basements, for inspection, condition assessment and retrofitting strategy	Completed
14	2013	Structural Audit for damage assessment & repair rehabilitation of Office Campus at Sector-132 Noida	M/s ADOBE Systems Pvt. Ltd.	Noida	RCC	G+8 storied building with 2 basements, for inspection, condition assessment and retrofitting strategy	Completed
15	2013	Rashmi Aptt. Pitampura			RCC	G+4 & G+7 storied building complex. 35 years old.	proposal under consideration
16	2013	Structural condition assessment report fo SOPA Indore	RKGA Consultants P. Ltd. Indore	Indore	RCC	Admin building at Indore for condition assessment and retrofitting	proposal under consideration
17	2014	Structural safety audit for BNCC BSF building camp of BSF Mathura	M/s JPG Construction pvt. Ltd.	mathura	RCC	Admin building, GOS Building, CFT-4 raft	Completed
18	2014	Structural safety audit for office building at B1/B sector 10, Noida	Smt. Kanta Devi Jain	Noida	RCC	G+3 storied building with one basement for inspection, condition assessment and retrofitting	Completed
19	2015	Retrofitting of mixing plant (Silo) at sector 24 Faridabd	M/s Prime India limites	Faridabad	RCC	G+3 storied mixing plant for inspection, condition assessment and retrofitting strategy	In progress
20	2015	Structural Auditing Consultancy services for Existing Structure	M/s Archigroup Architects	Noida	RCC	G+4 storey building for for inspection, condition assessment and retrofitting strategy	proposal under consideration
21	2015	Structural Auditing of MIND Building at Noida	M/s MGI Infra	Noida	RCC	G+4 storey building for for inspection, condition assessment and retrofitting strategy	proposal under consideration

22	2015	GAIL JUBILEE TOWER AT NOIDA, Corporate office	GAIL India Limited	Noida	RCC	Evaluation of structural safety post Nepal earthquake in view of observed cracks and further diagnosis. (2B+G+24 floor building)	Report submitted
23	2015	Gail Vihar , Sector-23, NOIDA	GAIL India Limited	Noida	RCC	Condition assessment of G+6 Residential complex post Nepal earthquake & proposal for retrofitting strategy.	Preliminary report submitted
24	2015	Gail Apartment Sector-62 NOIDA	GAIL India Limited	Noida	RCC	Condition assessment of G+4 Residential complex post Nepal earthquake & proposal for retrofitting strategy.	Preliminary report submitted

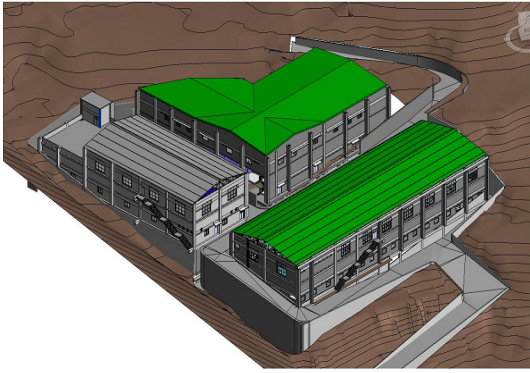
Note: We have agencies in our association who can do all NDT and building mapping work under our guidance and supervision.

We are also associated with IIT Delhi for structural Integrity Projects.

Dr.Abhay Gupta was also involved in screening of damaged building in Gujrat after Bhuj Earthquake in 2001 under the leadership of Prof. DG Dhavalikar & Prof. AS Arya on behalf of ASE Indore.

LIST OF INTERNATIONAL PROJECTS DONE UNDER LEADERSHIP OF DR.ABHAY GUPTA DURING HIS TENURE AT EIGEN, ESCOM, SKELETON & OTHERS						
S.NO.	NAME OF PROJECT	COUNTRY	CLIENT	TYPE OF PROJECT	CODE USED	YEAR
1	NEPAL SAMPLE HOUSE	NEPAL	LOOM CRAFTS SHADE SYSTEMS PVT.LTD.	RESIDENTIAL APARTMENT IN STEEL STRUCTURE	Nepal code	2015-16
2	STELIS BIOPHARMA PROJECT STAR	Nusajaya, Johor Darul Takzim, Malaysia	STELIS BIOPHARMA THROUGH NNE PHARMAPLAN INDIA LTD.	INDUSTRIAL	British Std	2014-15
3	DUBAI OUTLET MALL PHASE-II	DUBAI UAE	AL AHALI HOLDING GROUP	COMMERCIAL MALL	British Std	2014-15
4	ANIMAL VACCINE PLANT	JAKARTA, INDONESIA	PT SHS INTERNATIONAL	INDUSTRIAL	British Std	2013-14
5	HANUMANJI STATUE AT VISHNU MANDIR	TORONTO, CANADA	VOICE OF THE VEDAS CULTURAL SABHA INC.	COMMUNITY	British Std	2013-14
6	IT INNOVATION PARK	SWAZILAND, SOUTH AFRICA	MICT, SWAZILAND	IT PARK	South Africa Std	2012-14
7	BHASKAR GLOBAL PVT. LTD.	COLOMBO, SRILANKA	BHASKAR INDUSTRIES LTD., BHOPAL	ELEBLE OIL REFINERY		2003-04
8	SURFACE INVESTMENTS PVT. LTD.	ZIMBABWE	MR. NAROTTAM SOMANI	OIL SEEDS PROCESSING COMPLEX		2005-06

PHOTOGRAPHS/IMAGES/VIEWS OF SOME OF OUR MAJOR PROJECTS



NPI-PIIC COONOR FOR NNE PHARMAPLAN INDIA



NPI-INTEGRATED VACCINES COMPLEX (IVC) AT CHENNAI



NESTLE R&D CENTRE, MANESAR



EARTH INFRASTRUCTURE – SAPPHIRE COURT AT SEC-KP-V, GREATER NOIDA



OPULENT INFRA DEVELOPERS – XAVIERS HOUSING, SEC-168, NOIDA



ANSAL API HAWANA HEIGHTS AT SONIPAT



MULBERRY COUNTY, SECTOR 70, FARIDABAD



FACTORY BUILDING AT SEC-59 NOIDA (KENT RO)



RADDISON BLU HOTEL, FARIDABAD



RELIANCE IDC V AT DAKC, NAVI MUMBAI



AIMS GOLF TOWN AT SEC-4, G.NOIDA. (GH)



COMMERCIAL BUILDING AT PLOT NO.59, SEC-136 NOIDA



PLANT FOR INJECTION MOULDING AT G. NOIDA (ONS INFOTECH)



GHI SOHO TOWER AT SEC-67 GURGAON



SARE KOLATHUR, CHENNAI (VILLA)



SARE OMR, THIRUPORUR, CHENNAI (QUAD VILLA)



SARE OMR, THIRUPORUR, CHENNAI (TWIN VILLA)



MUVTONS CASTORS PVT.LTD. AT PHASE-2 NOIDA



OSWAL WOOLEN MILLS LTD. AT LUDHIANA



SIDHARTHA – NCR GREEN HOUSING AT SEC-95, GGN



ADVANT NAVIS BUSINESS PARK-PH II SECT-142, NOIDA



ANANTRAJ GROUP-COMM TOWER AT SEC-44, GGN



ANANTRAJ GROUP-HOUSING AT NEEMRANA, ALWAR



COMM BLDG AT PLOT 111-112 SEC-136, NOIDA



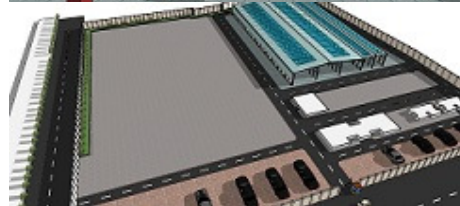
ANANTRAJ ESTATE VILLA (400 Yards), SEC-63A, GGN



WORKER'S HOUSING FOR RHYTHM TEXTILES & APPARELS PARK LTD. NEAR LUDHIANA



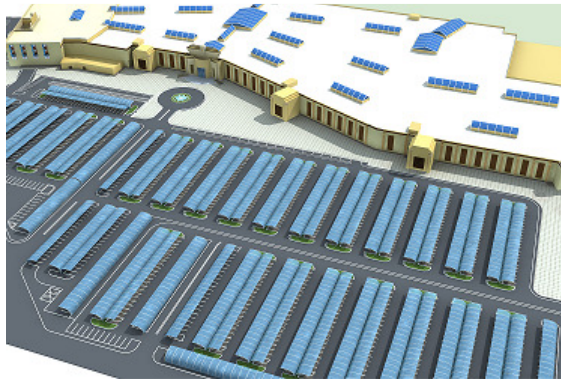
NCR ONE HOUSING AT SEC-95 GURGAON



INDCON PROJECTS & EQUIPMENT LTD. - INDUSTRIAL SHED AT DAHEJ, DISTT. BHARUCH (GUJARAT)

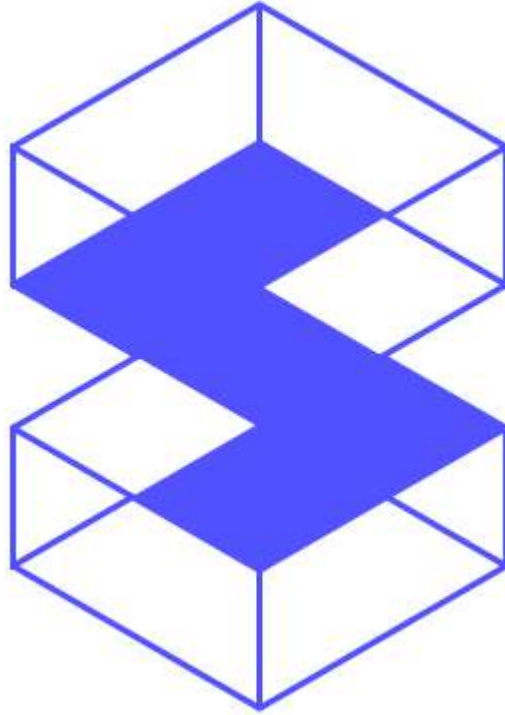


DUBAI OUTLET MALL



SKELETON - ORGANIZATION STRUCTURE

INDORE OFFICE				NOIDA OFFICE				
S No	Name	Designation	Qualification	S No	Name	Designation	Qualification	Exp in Yrs
DIRECTORS				DIRECTORS				
1	ARUN SODHANI	Director	ME (Struct.), MIE	1	ABHAY GUPTA	DIRECTOR	BE (Civil), ME (Struct.), Ph.D.	35
2	JAYESH KUMAR JAIN	Director	ME (Struct.), MIE					
ENGINEERS				ENGINEERS				
1	DURGESH MAHESHWARI	DGM - Projects	B.E. (Civil)	1	VANDANA VERMA	GM-Design	BE(Civil), ME(IEM)	25.5
2	SHAILENDRA GUPTA	AGM - Projects	B.Tech (Civil)	2	NITESH AGRAWAL	DM-Design	BE(Civil), PGD(CS)	9
3	MANISH BUNDELA	Deputy Manager	ME	3	SAURABH SHARMA	DM-Design	BE(Civil), PGD(CS)	9
4	HARSH YADAV	Structural Designner		4	MOHD MUEEZ KHAN	AM-Design	DCE, BE(Civil)	9
5	HEMANT MITTAL	Civil Engineer	B.E. (Civil)	5	PUSHPA KUMARI	Sr.Design Engineer	B.E (Civil)	8
6	AMIT ARYA	Sr. Engineer	B.E. (Civil)	6	AWANISH KUMAR	Design Engineer	MAS, B.Tech	0.42
				7	SEEMA SINGH	Design Engineer	B.E.(Civil)	5.17
ARCHITECT				8	Japungulie Chase	Design Engineer	B.Tech	5.67
1	HEMANGEE JOSHI	Manager	B.Arch	9	DAMANPREET KAUR	Design Engineer	B.Tech (Civil)	4
2	SAMRUDDHI SATPUTE	Architect	B. Arch	10	SAMEEM ANSARI	Design Engineer	B.Tech (Civil)	3.5
DETAILERS				11	RAHUL KUMAR	Jr.Design Engineer	B.Tech(Civil)	2.5
1	NARENDRA PATIL	Asst Manager	B.com+ITI+Diploma in Civil Engineer	DETAILERS				
2	PUSHPA RATHORE	Sr. Detailer	Architectural Assistantship (3 years course)	1	PRIYESH KANKOKARAN	Asst Manager	ITI-Draughtsman Civil, Diploma in CIVIL Engg.	13
3	PAVAN SINGH PANWAR	Sr. Detailer	Diploma in Machanical, Draftsmen & Autocad	2	SUMAN MAGGU	Asst Manager	ITI-Draughtsman Civil, Diploma in CIVIL Engg.	10
4	SARASWATI NIMBALKAR	Detailer	Architectural Assistantship (3 years course)	3	JOBY JOSEPH	AM-Detailing	ITI civil Draftsman	13
5	RAJESH MORYA	Detailer	ITI Civil Draftsmen	4	SOBHAN SINGH RAWAT	AM-Detailing	ITI Civil Draftsmen	16
6	SACHIN CHOUDHARY	Detailer	ITI Civil Draftsmen	5	DEVI PRASAD	AM-Detailing	MA(Hon), ITI civil D'Man	15.5
7	GORELAL PATIDAR	Detailer	Diploma in Civil Engineer	6	JOBY PAUL	Sr. Detailer	ITI-Draughtsman Civil, ITI-Plumber	7
8	ANAY LAKHE	Detailer	ITI Civil Draftsmen	7	RINEESH KUMAR	Sr. Detailer	12th + Diploma in draughtsman	10
ADMINISTRATIVE				8	DEVENDRA PATWAL	Sr.Detailer	ITI Civil D'man, BA	7.5
1	ROHIT BHAVSAR	Manager Admn.	Diploma in Computer Application, B.A.	9	NISHA RAWAT	Detailer	ITI Civil D'man, BA	6.5
2	RAVI MAIYAR	Office Assistant	9th	10	DEVENDRA SINGH RAWAT	Detailer	ITI Civil Draftsmen	4.17
				PROJECT				
				1	MUSHRRAT	AM Projects	Diploma in Civil Engg	6
				2	CHANDER KANT	Jr. Engineer (Civil)	DCE	1
BANGALURU OFFICE				ADMINISTRATIVE				
1	BABUMON PJ	Project Manager	ITI-Draughtsman Civil, Diploma in CIVIL Engg.	1	SK BHASIN	GM-Admin	B.Sc., Delhi University	49.67
				2	SELVI BISHT	Manager-Admn	BA (Eco.)+ Typing	30.34
				3	VIRENDRA SINGH BORA	Admin Executive	BA(Arts)	6.42
				4	Surjeet	Office Assistant	10th	5.17
				5	Hanuk Bada	Office Assistant	12th	6.42



Regd. Office - 412, "Satguru Parinay"
Plot No. 5, P.U.-3, Commercial
Scheme No. 54, Opp. C-21 Mall
Near Pakiza Retail, Indore (M.P.) 452010
Ph.- 0731-2551267
E-mail- skeletonindore@skeleton.in

NCR Delhi - A-75, Second Floor
Sector#5, Noida-201301
Ph.- 0120-2425006, 2425007
E-mail-skeletondelhi@skeleton.in